



**BOARD OF
REGENTS**
STATE OF IOWA

FUNDING THE FUTURE: STATE APPROPRIATIONS FOR IOWA'S REGENT INSTITUTIONS

Fiscal 2014

Iowa Facts

2

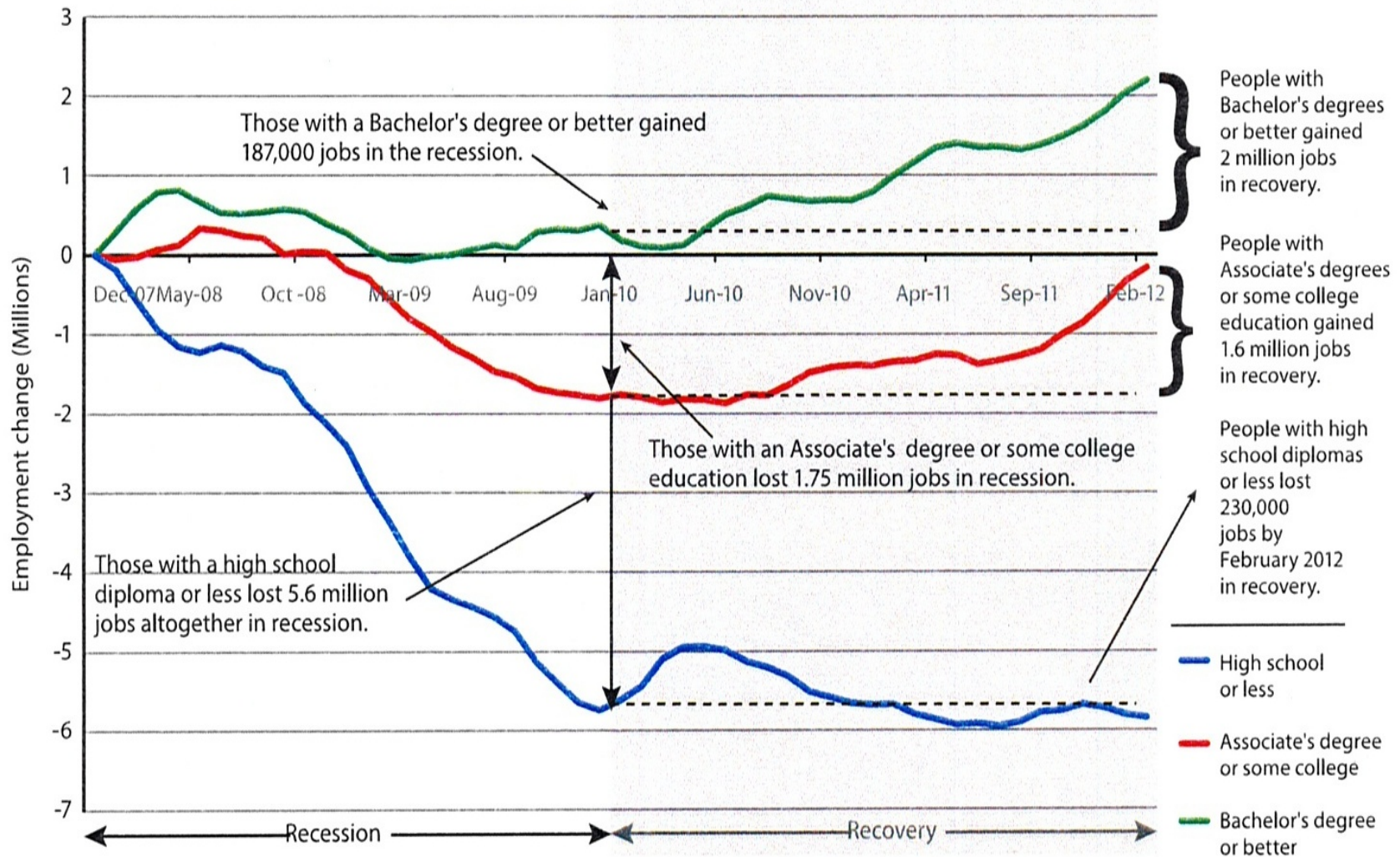
- ❑ Analysis conducted by Georgetown University shows that fully 60 percent of jobs in the U.S. will require postsecondary education by 2018.
- ❑ Governor Branstad has set goals to create 200,000 new jobs for Iowans and increase family incomes by 25%.
- ❑ September 2010 report from the Lumina Foundation concludes that Iowa will need to fill 319,000 jobs requiring postsecondary credentials by 2018.
- ❑ Regent institutions are preparing students for the Iowa economy.

Impact of Iowa's Public Institutions

3

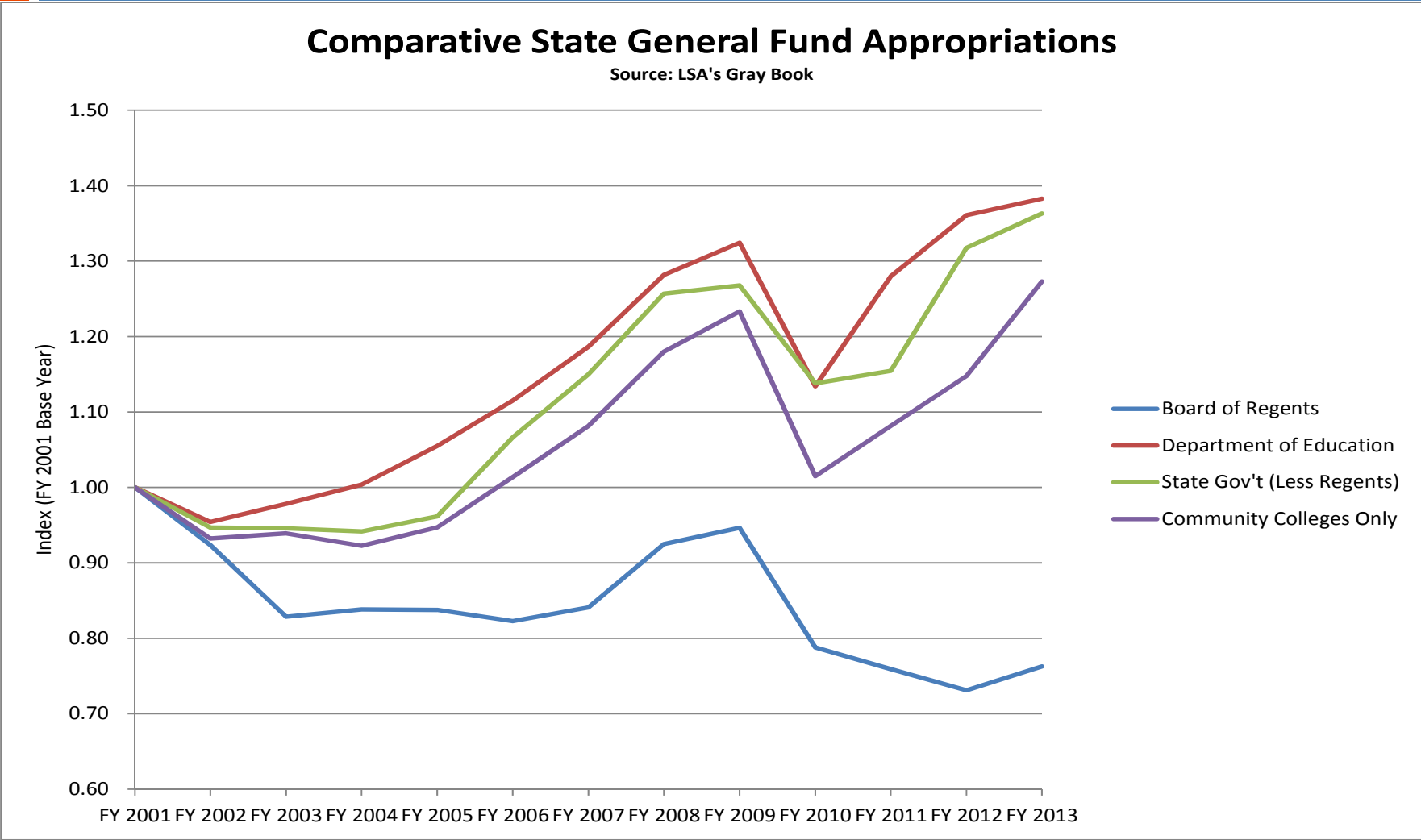
- ❑ Iowa's public universities contribute between \$8–\$9 billion annually to Iowa's economy
- ❑ Last year, \$842 million was secured in sponsored research for the betterment of Iowans and the nation
- ❑ Regent institutions educate nearly 75,000 students and employ over 46,000 Iowans
- ❑ The Regent Enterprise has a \$4.7 billion budget, 15% funded by State dollars

Job Recovery



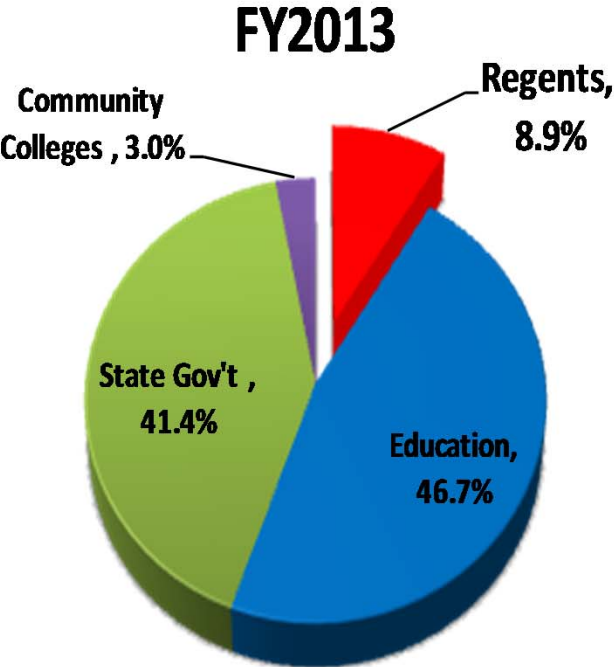
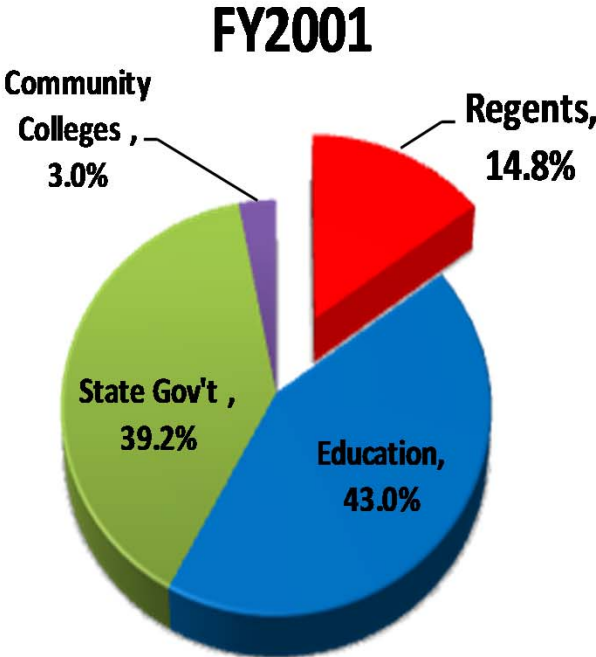
Source: Center on Education and the Workforce, Georgetown University

Comparative State General Fund Appropriations

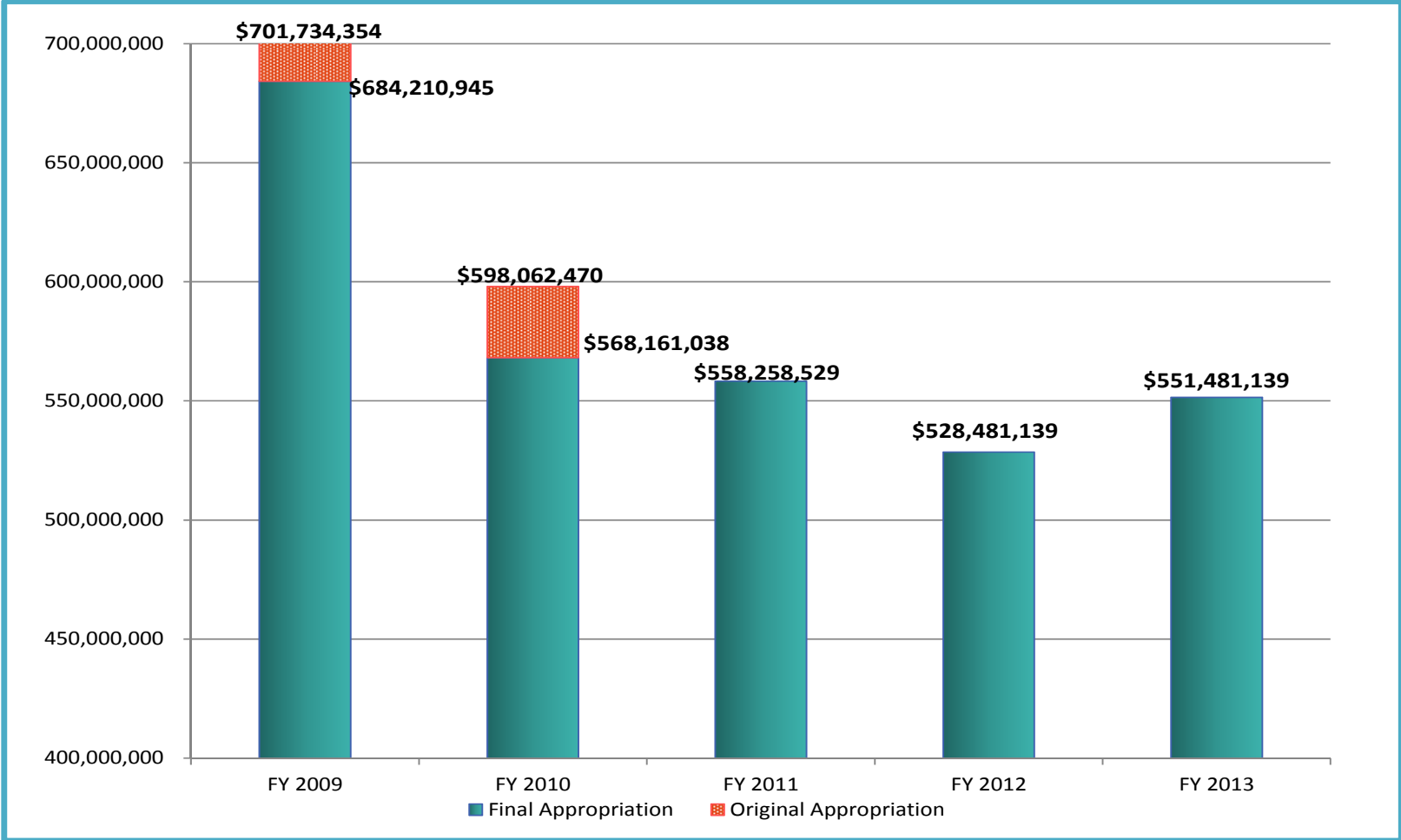


Source: LSA's Gray Book

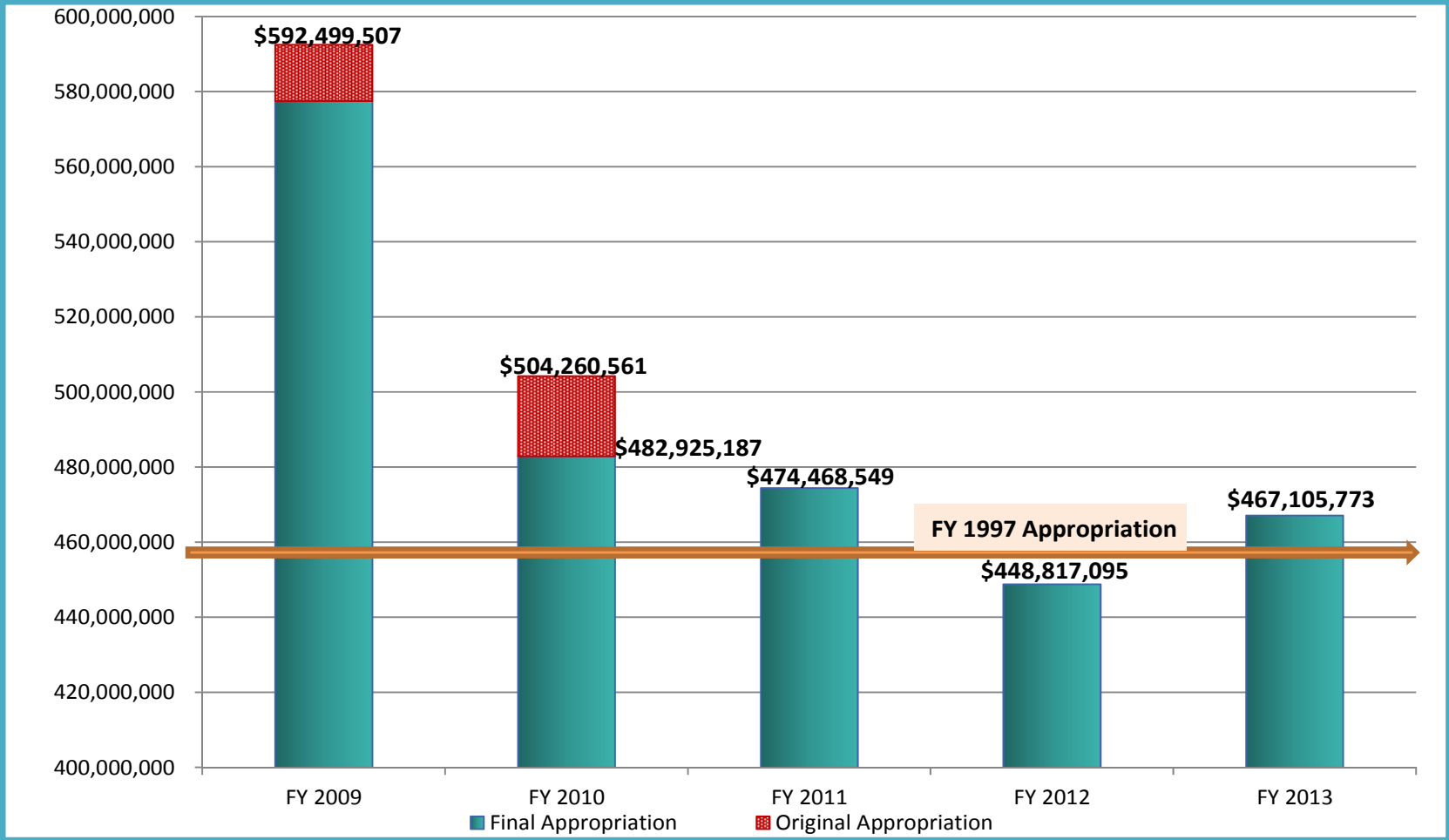
Regents Share of State Budget Decreased



State Operating Appropriations



General University State Funding

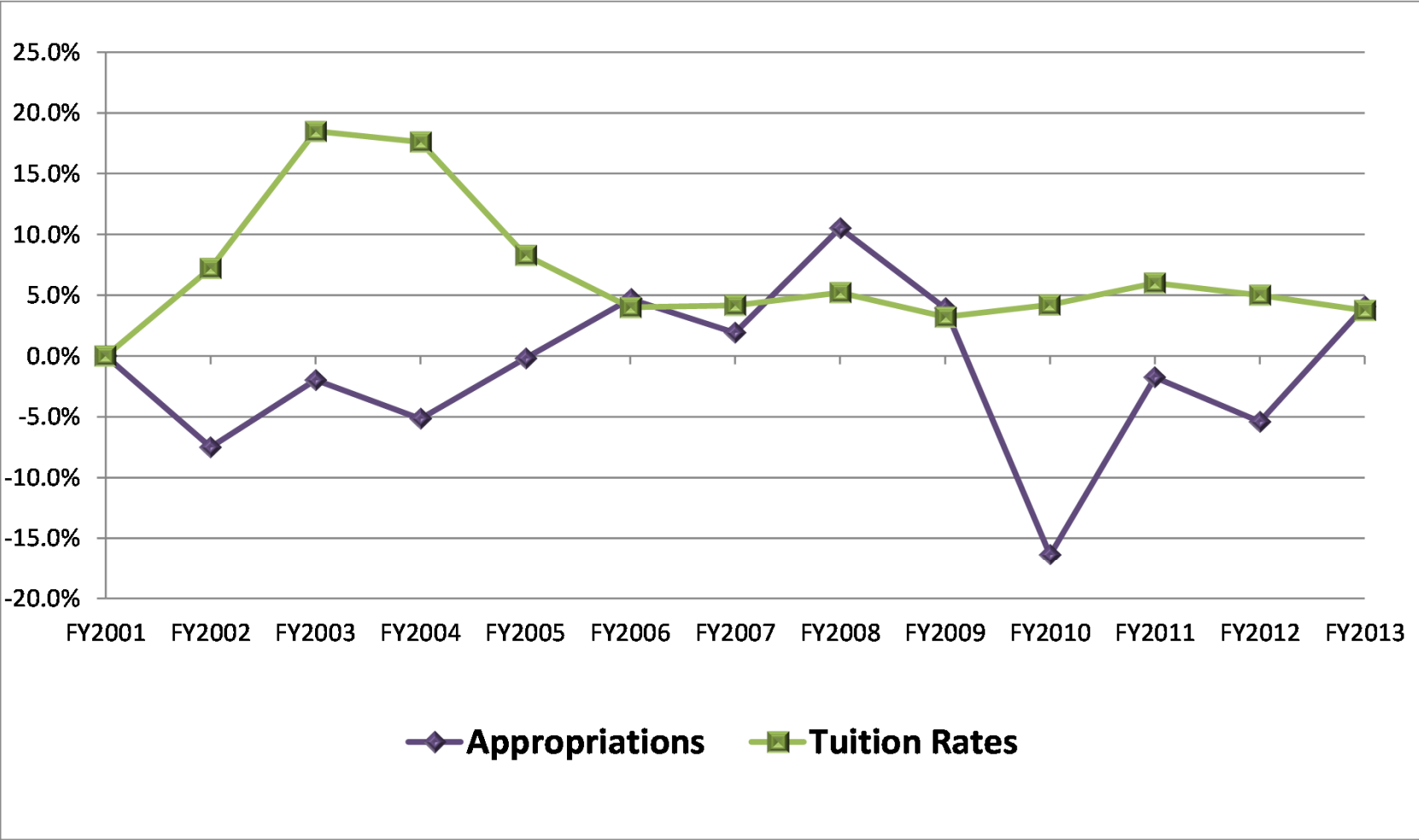


Perspective on State Appropriations

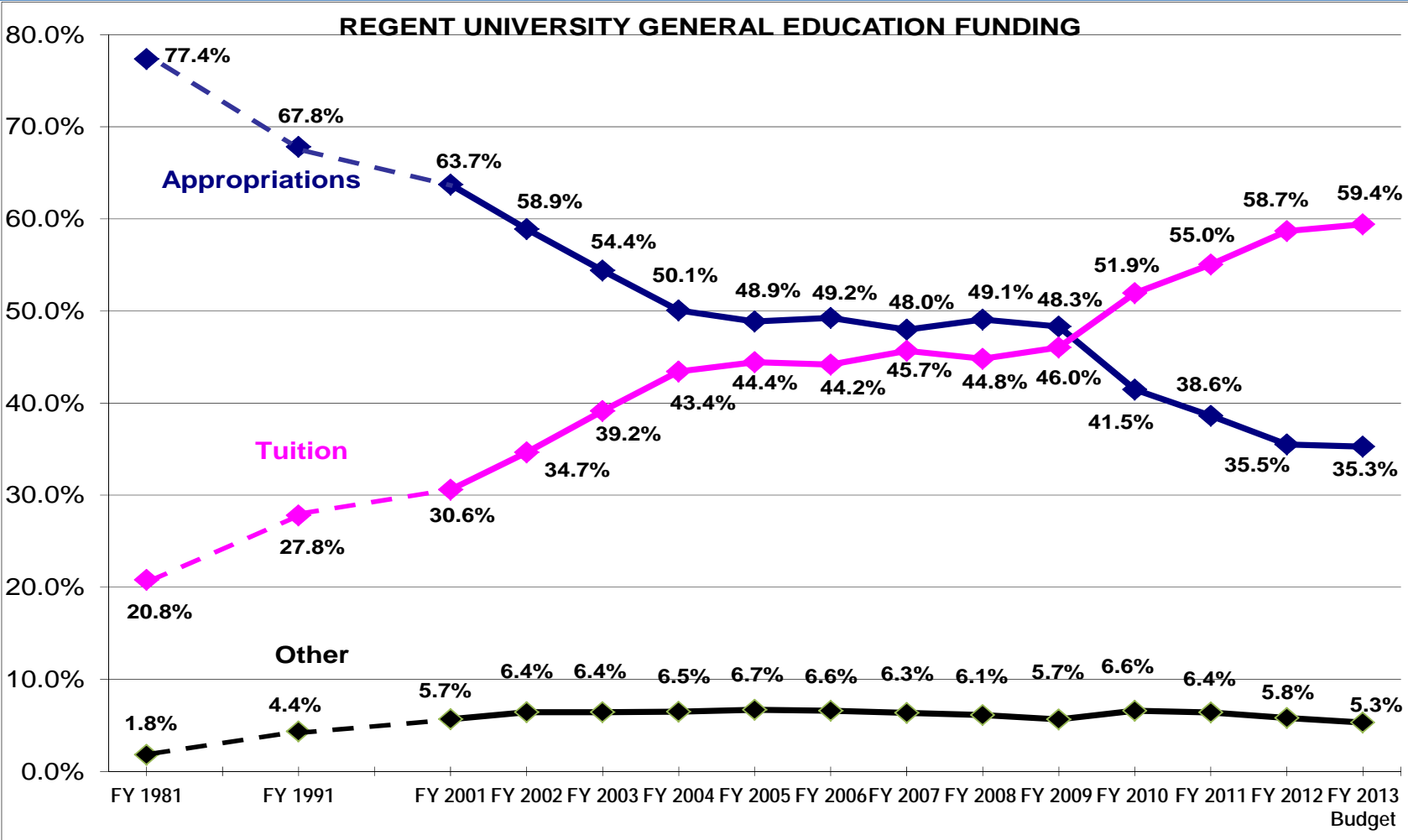
9

- ❑ Appropriation cuts since FY 2009 for general education total \$125 million – the equivalent of defunding UNI 1.5 times
 - ❑ (adding cuts for economic development and other services brings the total to \$150 million)
- ❑ Iowa's Public Universities have absorbed 21 percent in cuts the last five years.
- ❑ FY 2012 funding is 2.6% above 1997 levels; in real dollars, our appropriation is the same as it was 30 years ago, despite steady enrollment growth.
- ❑ Cuts to Iowa's Public Universities in FY 2010 were among the most severe in the nation.

State Reductions Impact on Tuition Rates



Change in General University Funding Sources



FY 2014 Operating Appropriations Request

12

- Appropriations requests for FY 2014 must be submitted to the State by October 1
- Total incremental request is \$40.1M; 40% for Higher Education
- Regent request covers seven major functional areas:
 - Higher Education
 - Special School Education
 - UIHC IowaCare Program
 - Iowa Public Radio
 - Legislative Special Purpose
 - Economic Development
 - Tuition Replacement

Higher Education

13

FY 2013 Recurring Appropriations	\$467,105,773
Incremental Funds	12,144,750
Strategic Initiatives	<u>4,000,000</u>
Proposed Total Appropriations	\$483,250,523
Total Requested Increase	\$ 16,144,750

Legislative Special Purpose

14

FY 2013 Recurring Appropriations	\$ 68,136,816
Incremental Funds	1,473,224
Strategic Initiatives	<u>16,127,563</u>
Proposed Total Appropriations	\$ 90,437,603
Total Requested Increase	\$ 17,600,787

Strategic Initiatives

15

STEM - Recurring	\$ 4,700,000
------------------	--------------

NEW

Bioeconomy	7,500,000
------------	-----------

Entrepreneurship	7,000,000
------------------	-----------

State Hygienic Lab	865,199
--------------------	---------

Veterinary Diagnostic Lab	<u>762,364</u>
---------------------------	----------------

Total Requested New	\$ 17,600,787
---------------------	---------------

Special Schools

FY 2013 Recurring Appropriations	\$ 12,638,685
Incremental Funds	<u>379,161</u>
Proposed Total Appropriations	\$ 13,017,846
Total Requested Increase	\$ 379,161

Economic Development

FY 2013 Recurring Appropriations	\$ 3,208,297
Incremental Funds	83,416
Strategic Initiatives	150,000
Replacement of One-time Funding	<u>3,000,000</u>
Proposed Total Appropriations	\$ 6,441,713
Total Requested Increase	\$ 3,233,416

Total Appropriations Request

18

FY 2013 Recurring Appropriations	\$603,896,135
Incremental Funds	16,833,577
Strategic Initiatives	20,277,563
Replacement of One-time Funding	<u>3,000,000</u>
Proposed Total Appropriations	\$644,007,275
Total Requested Increase	\$ 40,111,140