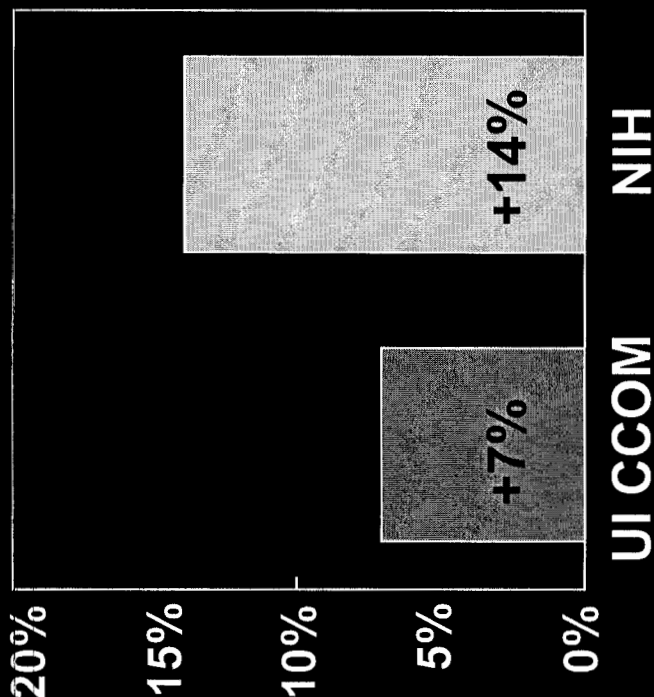
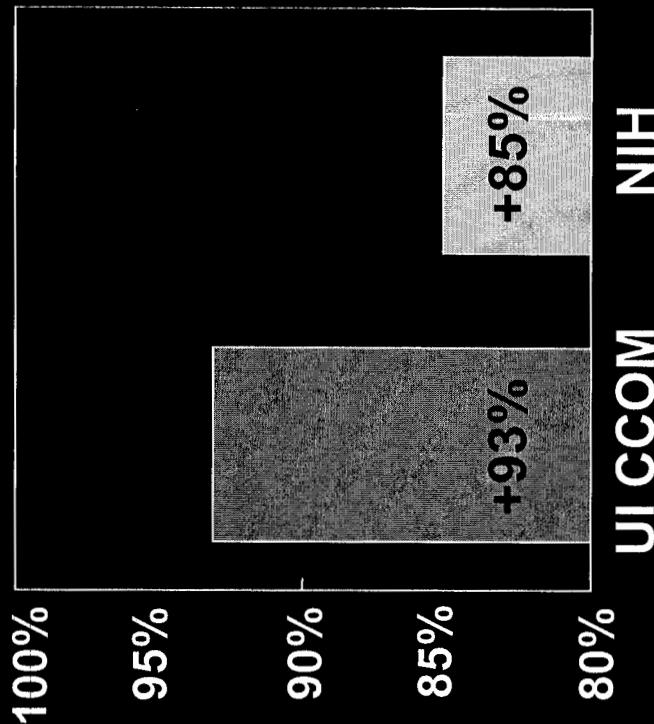


Comparison of percentage growth in total National Institutes of Health awards and UI Carver College of Medicine NIH research funding

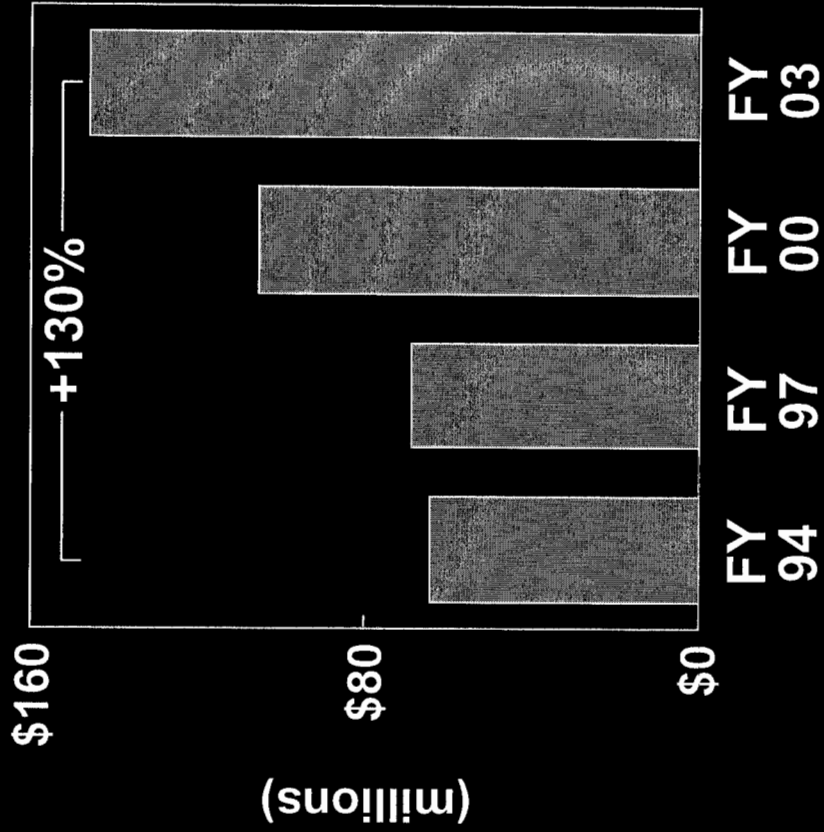
FY 94-FY 97



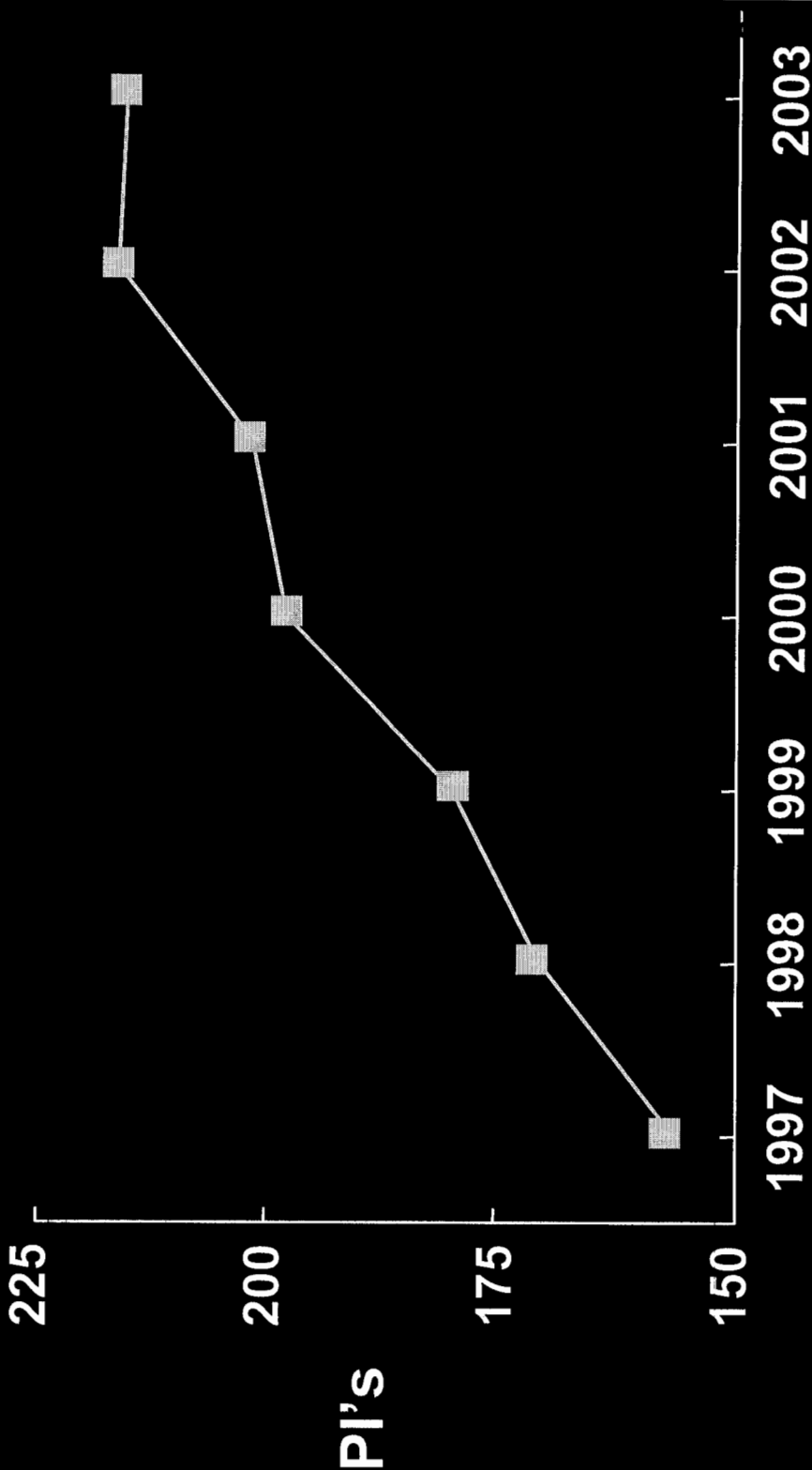
FY 97-FY 02



# UI Carver College of Medicine NIH Research Funding

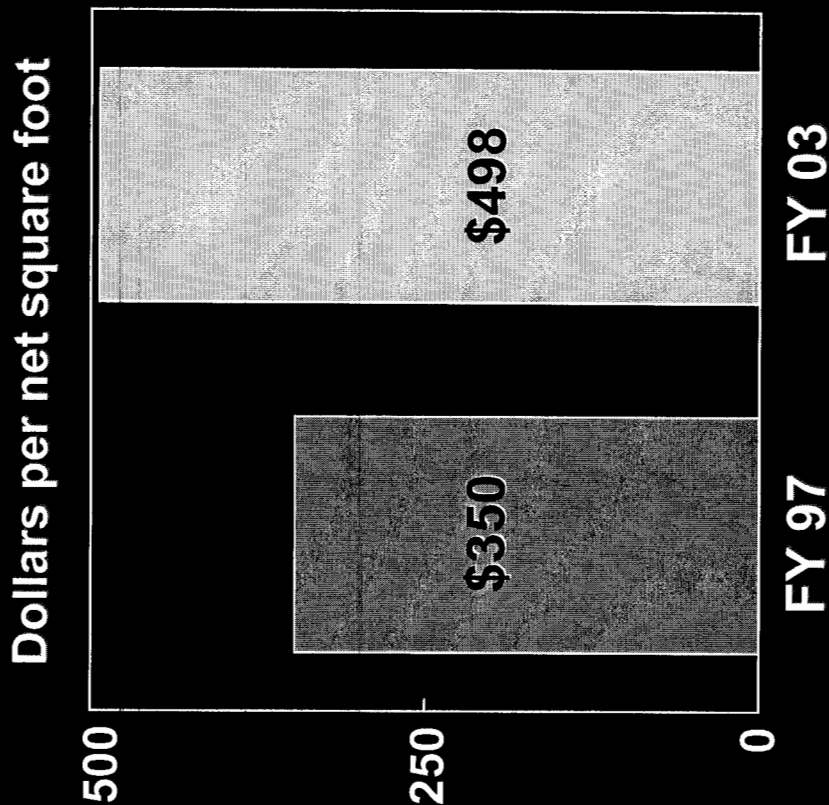


# Number of principal investigators, 1997-2003



February 2004 Dean's Report to the Board of Regents, State of Iowa

# Research Space Funding



Increased "space funding" occurred in face of increased total research space

February 2004 Dean's Report to the Board of Regents, State of Iowa

## **Guidelines for Research Space Assignment**

- **Promote recruitment, growth and retention of outstanding faculty scientists**
- **Facilitate interdisciplinary research and centers**
- **Promote programmatic grouping of scientists**
- **Assume that Oakdale research space is integral component of CCOM research programs**
- **Develop space for clinical and health services research as well as basic research**

# NIH Funding to Public Medical Schools Ranked by Total NIH Funding FY 2002

Rank	Institution	Total NIH Funding	Total Faculty*	SS's per faculty	Number of Grants	Number Grants per faculty
1	University of California-San Francisco-School of Medicine	313,335,255	1421	220,503	740	0.521
2	University of Washington School of Medicine	260,434,828	1713	152,034	649	0.379
3	University of California Los Angeles School of Medicine	241,869,389	1955	123,718	603	0.308
4	University of Michigan Medical School	224,089,198	1566	143,097	599	0.383
5	University of North Carolina-School of Medicine	190,347,057	1052	180,938	461	0.438
6	University of California-San Diego-School of Medicine	185,421,004	681	272,278	407	0.598
7	University of Alabama School of Medicine	176,906,233	955	185,242	438	0.459
8	University of Texas Southwestern Medical Center/Dallas	161,590,721	1123	143,892	396	0.353
9	University of Colorado Health Science Center School of Medicine	154,375,419	1431	107,879	429	0.300
10	University of Iowa Carver College of Medicine	131,301,535	783	167,690	341	0.436
11	University of Wisconsin Medical School	123,528,949	920	134,271	320	0.348
12	University of Minnesota-Minneapolis-Medical School	118,326,042	1237	95,656	360	0.291
13	Oregon Health Sciences University School of Medicine	117,658,179	1006	116,956	384	0.382
14	University of Virginia School of Medicine	116,030,585	790	146,874	353	0.447

\* Total faculty figures from AAMC Institutional Profile information.

February 2004 Dean's Report to the Board of Regents, State of Iowa

# NIH Funding to Public Medical Schools Ranked by Number of Grants per Faculty FY 2002

Rank	Institution	Total NIH Funding	Total Faculty*	Number of Grants	Number of Grants per faculty
1	University of California-San Diego-School of Medicine	185,421,004	681	407	0.598
2	University of California-San Francisco-School of Medicine	313,335,255	1421	740	0.521
3	University of Alabama School of Medicine	176,906,233	955	438	0.459
4	University of Virginia School of Medicine	116,030,585	790	353	0.447
5	University of North Carolina-School of Medicine	190,347,057	1052	461	0.438
6	University of Iowa Carver College of Medicine	131,301,535	783	341	0.436
7	University of Michigan Medical School	224,089,198	1566	599	0.383
8	Oregon Health Sciences University School of Medicine	117,658,179	1006	384	0.382
9	University of Washington School of Medicine	260,434,828	1713	649	0.379
10	University of Texas Southwestern Medical Center/Dallas	161,590,721	1123	396	0.353
11	University of Wisconsin Medical School	123,528,949	920	320	0.348
12	University of California Los Angeles School of Medicine	241,869,389	1955	603	0.308
13	University of Colorado Health Science Center School of Medicine	154,375,419	1431	429	0.300
14	University of Minnesota-Minneapolis-Medical School	118,326,042	1237	360	0.291

\* Total faculty figures from AAMC Institutional Profile information.

# NIH Funding to Public Medical Schools Ranked by Dollars per Faculty FY 2002

Rank	Institution	Total NIH Funding	Total Faculty*	\$'s per Faculty
1	University of California-San Diego-School of Medicine	185,421,004	681	272,278
2	University of California-San Francisco-School of Medicine	313,335,255	1421	220,503
3	University of Alabama School of Medicine	176,906,233	955	185,242
4	University of North Carolina-School of Medicine	190,347,057	1052	180,936
5	University of Iowa Carver College of Medicine	131,301,535	783	167,690
6	University of Washington School of Medicine	260,434,828	1713	152,034
7	University of Virginia School of Medicine	116,030,585	790	146,874
8	University of Texas Southwestern Medical Center/Dallas	161,590,721	1123	143,892
9	University of Michigan Medical School	224,089,198	1566	143,097
10	University of Wisconsin Medical School	123,528,949	920	134,271
11	University of California Los Angeles School of Medicine	241,869,389	1955	123,718
12	Oregon Health Sciences University School of Medicine	117,658,179	1006	116,956
13	University of Colorado Health Science Center School of Medicine	154,375,419	1431	107,879
14	University of Minnesota-Minneapolis-Medical School	118,326,042	1237	95,656

\* Total faculty figures from AAMC Institutional Profile information.



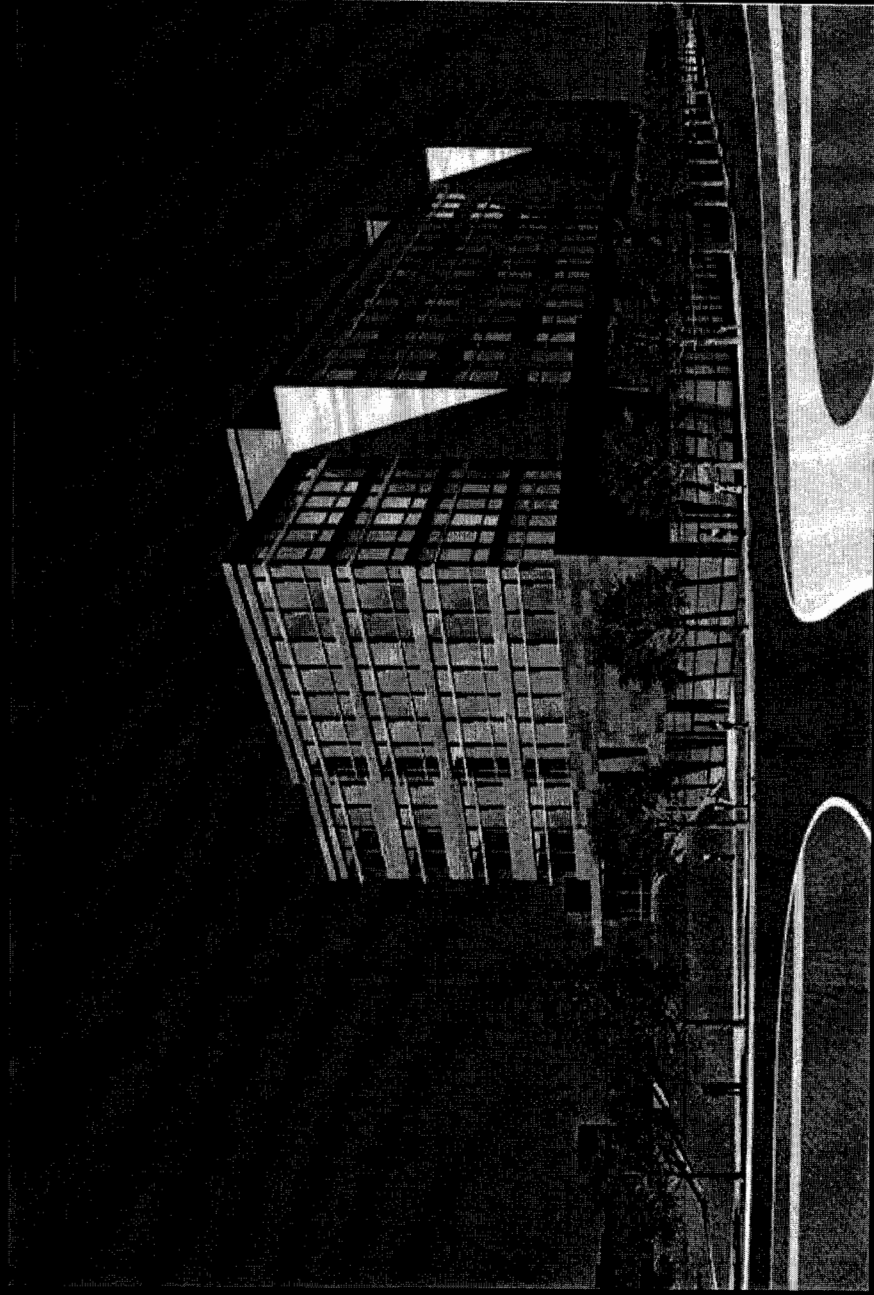


## **US News & World Report Rankings Top Research-Oriented Public Medical Schools**

- 1. UC-San Francisco**
- 2. University of Michigan**
- 3. University of Washington**
- 4. UC-Los Angeles**
- 5. University of Texas Southwestern**
- 6. UC-San Diego**
- 7. University of North Carolina-Chapel Hill**
- 8. University of Alabama-Birmingham**
- 9. University of Virginia**
- 10. UNIVERSITY OF IOWA**
- 11. University of Wisconsin-Madison**

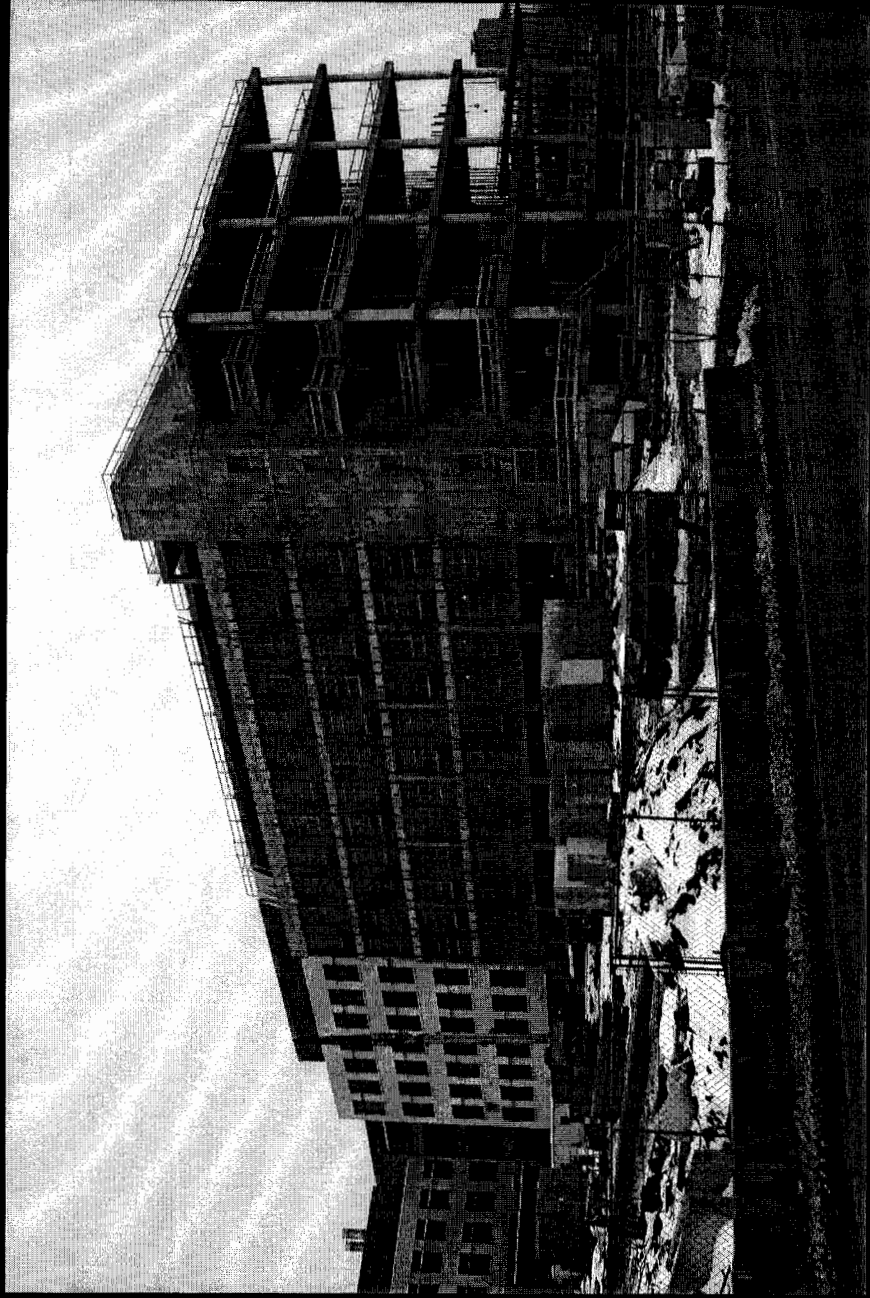
# Carver Biomedical Research Building Update

## Construction progress report on CBRB.



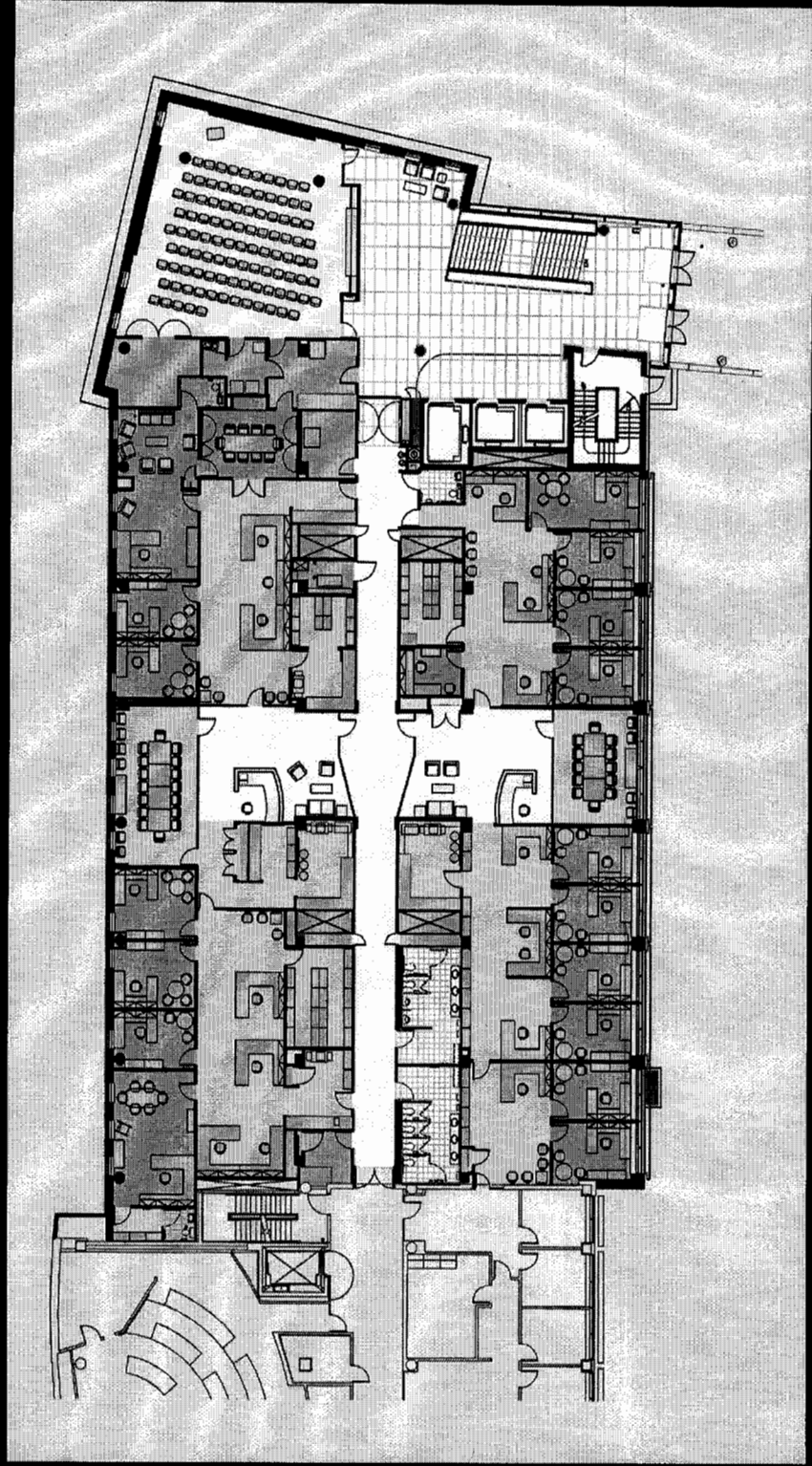
# Carver Biomedical Research Building Update

The CBRB is six months ahead of schedule.



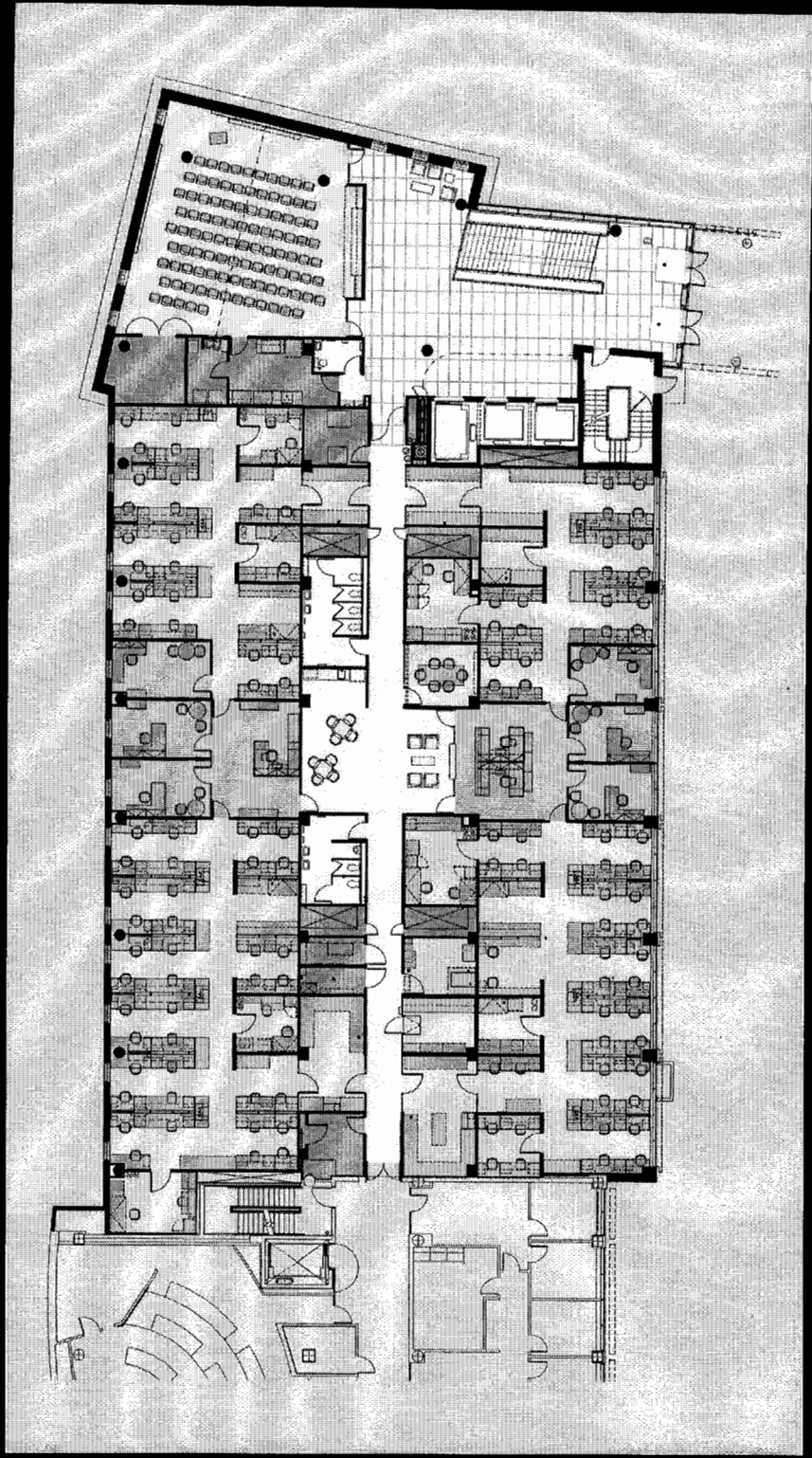
# Carver Biomedical Research Building Update

**We request permission to change CBRB administrative space into lab space.**



# Carver Biomedical Research Building Update

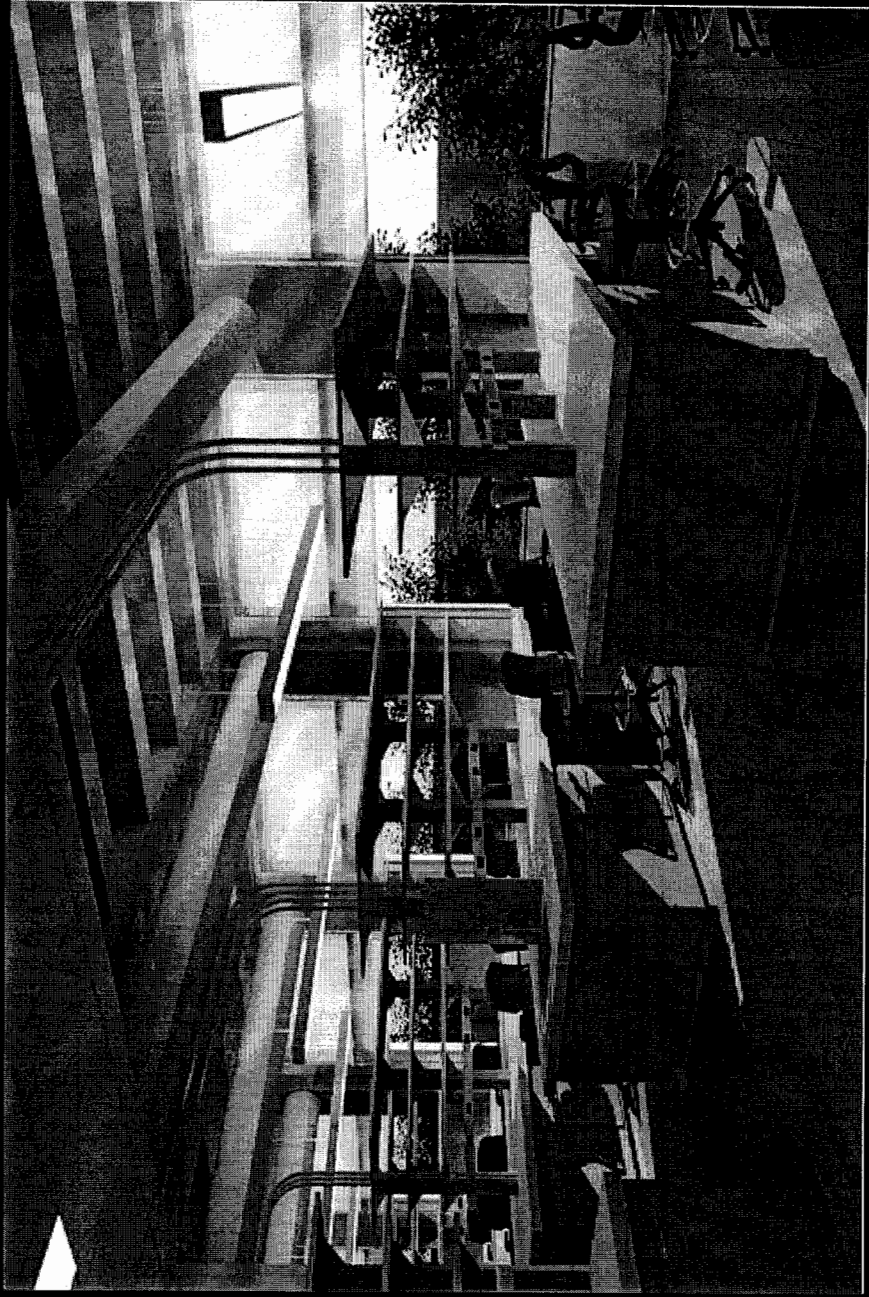
**What was to be the Dean's Office area  
will now house wet labs.**



*February 2004 Dean's Report to the Board of Regents, State of Iowa*

# Carver Biomedical Research Building Update

**The change will add a much-needed  
11,500 square feet of laboratory space.**



# Carver Biomedical Research Facility

## Future Plans

- Center for Muscular Dystrophy
- Center for Auditory Regeneration and Hearing
- Molecular Medicine

## Summary and conclusions

- The Carver Biomedical Research Building six months ahead of schedule.
- Space planned as Dean's Office will be wet lab space.
- The opening of CBRB will help immensely in recruiting department heads and in recruiting and retaining outstanding faculty scientists.