

UNIVERSITY OF IOWA HOSPITALS AND CLINICS Institutional Score Card

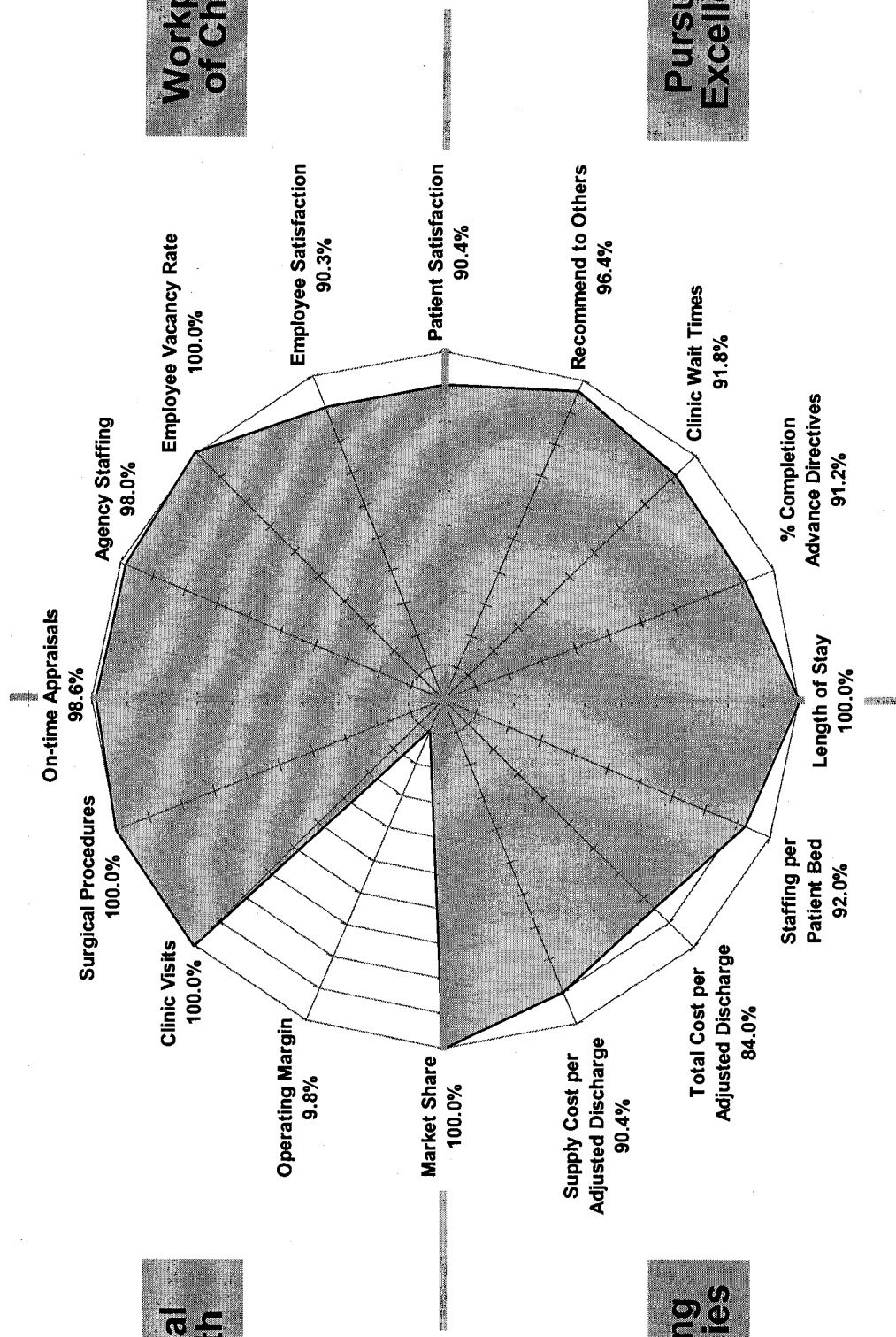
7/1/03 - 12/31/03

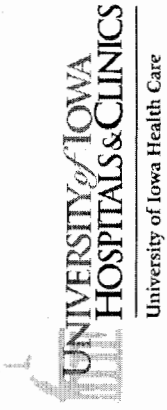
Financial Strength

Workplace of Choice

Improving Efficiencies

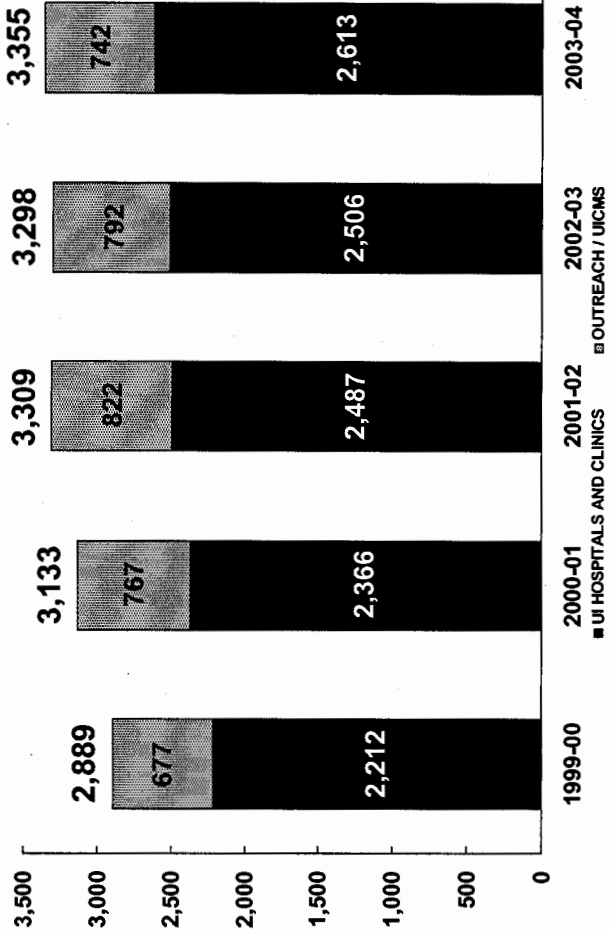
Pursuing Excellence





**UNIVERSITY OF IOWA HOSPITALS AND CLINICS
AVERAGE DAILY CLINIC CENSUS**

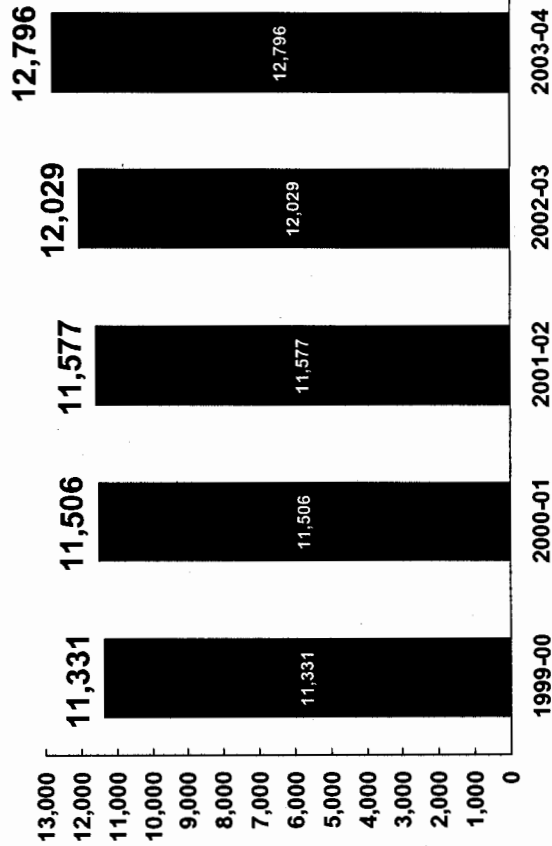
JULY - DECEMBER



**UNIVERSITY OF IOWA HOSPITALS AND CLINICS
PATIENT CENSUS DATA**

JULY - DECEMBER

ACUTE ADMISSIONS
(excluding newborn nursery)



UNIVERSITY OF IOWA HOSPITALS AND CLINICS Comparative Financial Results for July through December

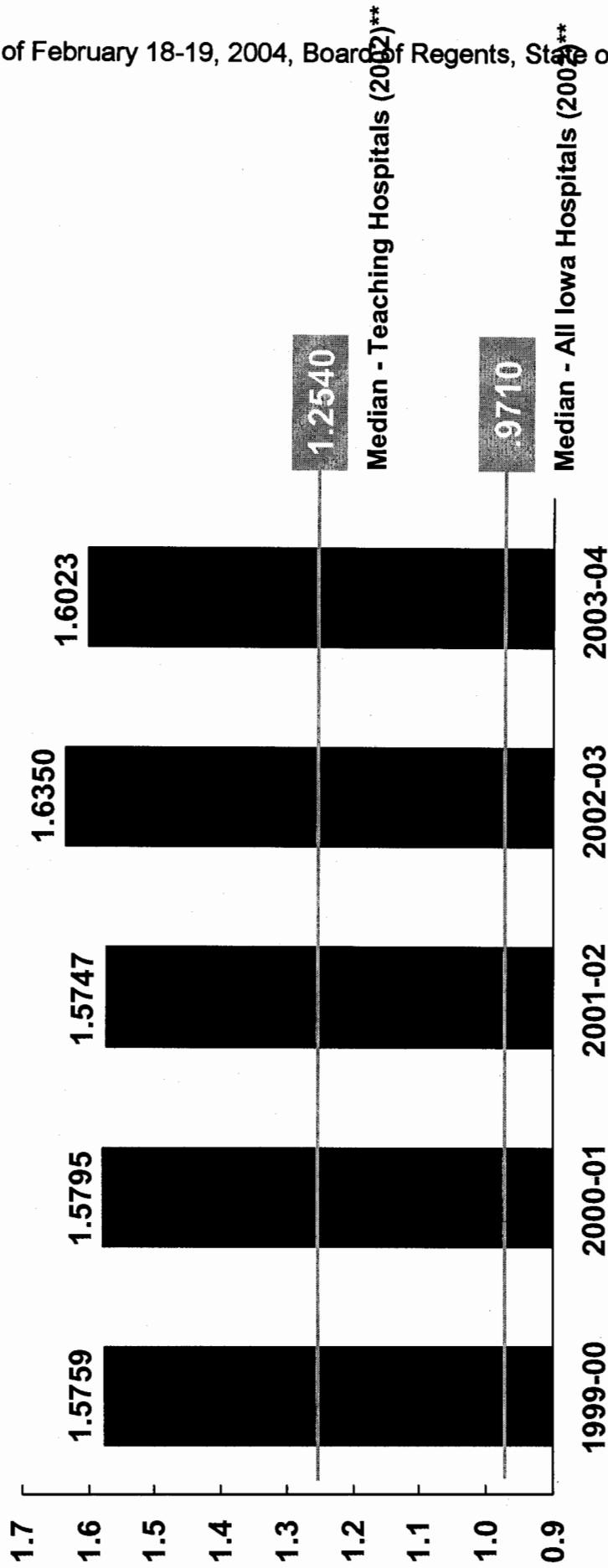
	July-Dec FY 2002	July-Dec FY 2003	July-Dec FY 2004	% Change '03 to '04
NET REVENUES:				
Total Pay Patient Rev.	\$240,414,909	\$259,925,952	\$277,291,925	6.7%
Appropriations	22,646,447	21,500,457	20,345,453	-5.4%
Other Operating Rev.	15,676,851	17,896,839	19,046,950	6.4%
Total	\$278,738,207	\$299,323,248	\$316,684,328	5.8%
EXPENSES:				
Salaries and Wages	\$146,949,538	\$157,928,689	\$169,847,421	7.5%
General Expenses	107,414,945	110,335,712	124,004,504	12.4%
Depreciation	20,468,000	21,570,723	21,746,725	0.8%
Interest Expense	409,219	449,405	66,534	-85.2%
Total	\$275,241,702	\$290,284,529	\$315,665,184	8.7%
Operating Margin	\$3,496,505	\$9,038,719	\$1,019,144	-88.7%
Operating Margin %	1.3%	3.0%	0.3%	-89.3%

* Bad debt is no longer classified as an operating expense. Bad debt expense for prior fiscal years has been reclassified as an offset to net paying patient revenue in accordance with recent Government Accounting Standards Board interpretations.

UNIVERSITY OF IOWA HOSPITALS AND CLINICS

CASE MIX INDEX - ALL ACUTE INPATIENTS*

JULY - DECEMBER



* THE CASE MIX INDEX REFLECTS THE OVERALL CLINICAL COMPLEXITY OF THE PATIENT CENSUS OF A GIVEN HOSPITAL BY ESTIMATING THE LEVEL OF RESOURCE CONSUMPTION OF THE AVERAGE PATIENT RELATIVE TO THAT OF ALL HOSPITALS NATIONALLY WHICH HAVE A CASE MIX INDEX OF 1.00.

** ALMANAC OF HOSPITAL FINANCIAL OPERATING INDICATORS, 2004 CHIPS