

Contact: Jean Friedrich

INSTITUTIONAL AGREEMENTS, LEASES AND EASEMENTS

Action Requested: Consider approving the lease amendment for the benefit of the University of Iowa and the easement for the benefit of Iowa State University as summarized below, subject to approval of the final documents by the Board Office and Attorney General's Office.

(Roll Call Vote)

Executive Summary: Iowa Code §262.11 requires that certain agreements, leases, and easements be approved by the Board of Regents by roll call vote. The lease amendment and easement have been reviewed by the Attorney General's Office and are subject to approval of the final documents by the Board Office and Attorney General's Office. Indemnification clauses are included in the lease amendment and easement.

UNIVERSITY OF IOWA

With Board as Tenant for the following:

University of Iowa Research Park (amendment)

The University is requesting approval of an amendment to its land lease with the University of Iowa Research Park Corporation for Lot 20 of the Oakdale Research Park, Phase Two.

Two new lots will be created out of the original Lot 20. The new Lot 2, Phase Four, is the Lot on which the National Advanced Driving Simulator (NADS) facility is located; this lot will continue to be leased by the University. The new Lot 1 will be transferred back to the University's Research Park and will be leased by the Research Park to EMRICO LLC., a privately held corporation, which will develop a new facility to be used for research activities with connections to NADS. (See the attached maps.)

The lease term for the new Lot 2, Phase Four, will be extended until February 28, 2061, to correspond to the current term of the Research Park Corporation's master land lease with the Board for the Oakdale Research Park.

IOWA STATE UNIVERSITY

With Board as Owner for the following easement:

City of Ames (new)

The City of Ames is currently in the design phase of installing a new 161,000 volt transmission line to improve the level of service to their customers, including Iowa State University. The route through the City will basically follow and reconstruct the current 69,000 volt transmission line across the Iowa State University campus with changes in the routing along Haber Road and University Boulevard. Once the new construction is completed, the current easement for the 69,000 volt system signed by the Board of Regents Executive Director on February 24, 1994, will be properly voided with the Story County Recorder.

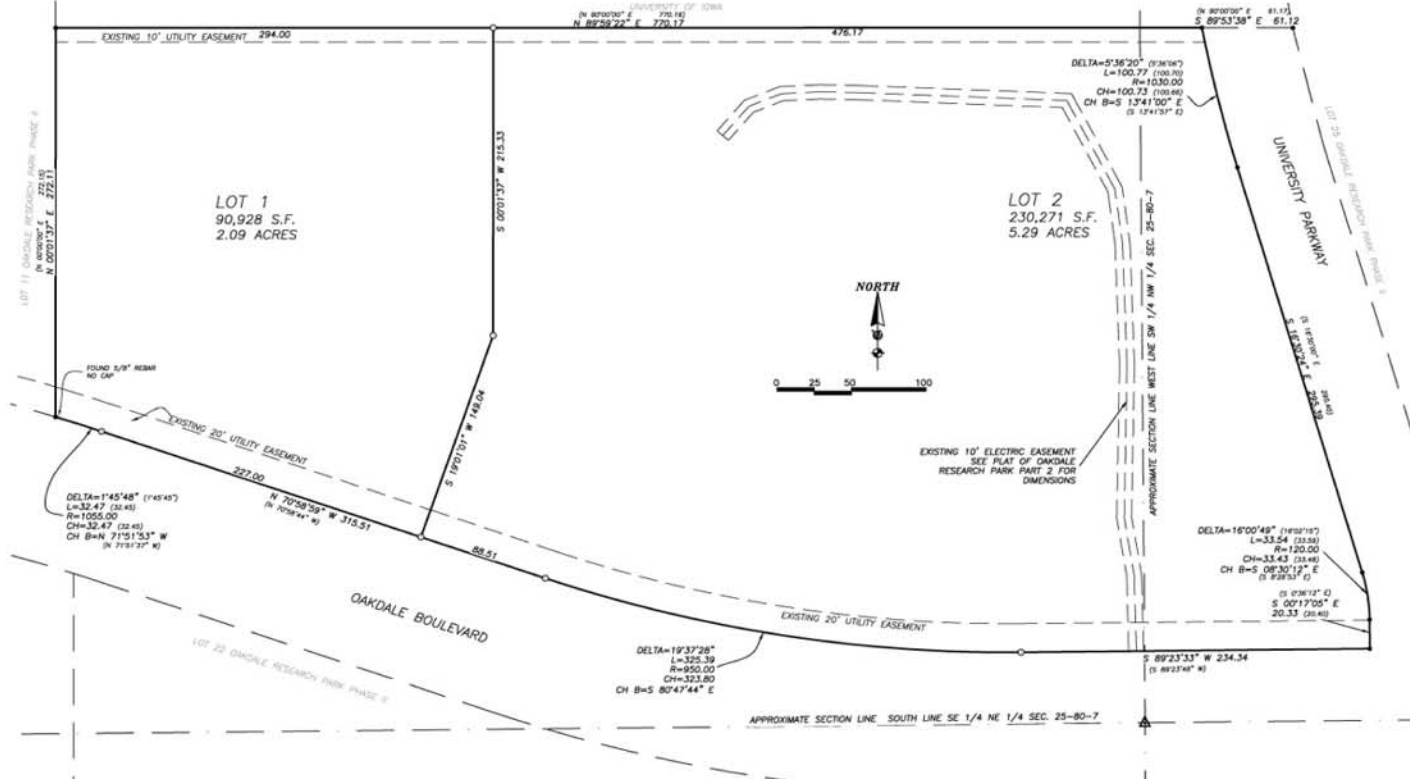
There will be no compensation for this easement as the construction of the new 161,000 volt transmission line is being completed jointly between the City of Ames and Iowa State University per the terms of the Ames-ISU Transmission System Agreement dated July 18, 1991.

Additional information is available from the Board Office.

LEGAL DESCRIPTION:

LOT 20 OAKDALE RESEARCH PARK SUBDIVISION PHASE 2, AS SHOWN ON THE PLAT RECORDED THEREIN IN PLAT BOOK 39 PAGE 108 OF THE RECORDS OF JOHNSON COUNTY, IOWA, CONTAINING 7.38 ACRES AND IS SUBJECT TO ANY EASEMENTS AND RESTRICTIONS OF RECORD.

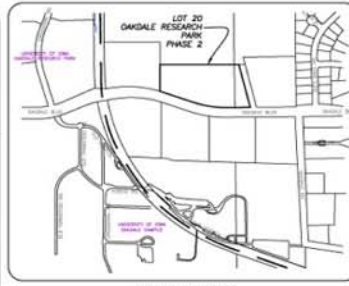
**FINAL PLAT
OAKDALE RESEARCH PARK SUBDIVISION, PHASE 4
A RE-SUBDIVISION OF LOT 20, OAKDALE RESEARCH PARK SUBDIVISION PHASE 2
CORALVILLE, IOWA**



LEGEND

- ▲ FOUND SECTION CORNER
- FOUND ROW RAIL
- FOUND 5" REBAR WITH YELLOW CAP DRIVE 12531 - OTHERS AS NOTED
- SET 30" x 5/8" REBAR W/ORANGE PLASTIC CAP # 15749

PLAT APPROVED BY THE CITY OF CORALVILLE	
WARD	DATE
CLERK	DATE
CHAIRPERSON OF PLANNING COMMISSION	DATE
UTILITY EASEMENTS AS SHOWN HEREON MAY OR MAY NOT INCLUDE SANITARY SEWER LINES, AND/OR STORM SEWER LINES, AND/OR WATER LINES.	
UTILITY EASEMENTS, AS SHOWN HEREON, ARE ADEQUATE FOR THE INSTALLATION AND MAINTENANCE OF THE FACILITIES REQUIRED BY THE FOLLOWING AGENCIES:	
MIDAMERICAN ENERGY COMPANY	DATE
SOUTH SLOPE TELEPHONE COOPERATIVE	DATE
MIDRACOM CABLE	DATE
IOWA COUNTY RURAL ELECTRIC CO-OP	DATE



OWNERS: THE STATE OF IOWA FOR THE USE AND BENEFIT OF THE STATE UNIVERSITY OF IOWA

PLAT PREPARED BY: VJ ENGINEERING 2570 HOLIDAY ROAD SUITE 10 CORALVILLE, IOWA 52241 (319) 338-4939

LESSEE/SUBDIVIDER: THE UNIVERSITY OF IOWA RESEARCH PARK CORPORATION ATTN: LARRY WILSON THE UNIVERSITY OF IOWA FACILITIES SERVICES 421 NORTH HALL IOWA CITY, IOWA 52242 (319) 335-1206

- NOTES:**
1. ERROR OF CLOSURE IS LESS THAN 1 IN 10,000 FEET.
 2. DIMENSIONS ARE IN FEET AND DECIMALS THEREOF.
 3. BASIS OF BEARINGS IS THE CALCULATED BEARING FROM THE SOUTHEAST CORNER OF LOT 20 TO THE SOUTHWEST CORNER OF LOT 20.

DATE OF SURVEY: 01/05/07

I hereby certify that this land surveying document was prepared and the related survey work was performed by me or under my direct personal supervision and that I am a duly licensed Land Surveyor under the laws of the State of Iowa.

DAVID M. WEST, L.S. DATE
 License number 15749
 My license renewal date is December 31, 2008
 Please do not alter or cover this seal.

VJ ENGINEERING
2570 HOLIDAY ROAD
CORALVILLE, IOWA 52241 319-338-4939

FINAL PLAT, OAKDALE RESEARCH PARK PH. 4
RE-SUBDIVISION OF LOT 20, ORP PHASE 2
CORALVILLE, IOWA