

Contact: Brad Berg

PROPOSED BOND ISSUANCE SCHEDULE FOR CALENDAR YEAR 2022

Actions Requested: Recommend the Board approve the following:

1. Establishment of a planning schedule for the issuance of bonds for calendar year 2022 as detailed in this memorandum.
2. Adoption of a Resolution authorizing the Executive Director to fix the date or dates for the sale of Academic Building Revenue Bonds, refunding bonds, and other sales as may be authorized as a component of a Board approved financing plan for an identified capital project.

(ROLL CALL VOTE)

Executive Summary: Annually, the Board establishes a bond issuance schedule for the following calendar year. The proposed schedule is only a planning guide and may not reflect actual bonds issued during calendar year 2022. Approval of the schedule does not indicate that the Board Office has reviewed or recommended approval of all projects to be financed from the proposed sales or that the Board will approve the projects and the bond sale amounts. The schedule does not include bond issues which would require additional legislative authorization or bonds which might be sold by the University of Iowa or the Iowa State University Facilities Corporations.

The Board is also asked to adopt a resolution which would authorize the Executive Director to fix the date(s) for the sale of Academic Building Revenue Bonds and refunding bonds and other sales which may be authorized as a component of a Board approved financing plan for a specific capital project. After adoption of the resolution, the Board would not necessarily need to approve, as a separate agenda item, a preliminary resolution for each bond sale.

The proposed planning schedule for calendar year 2022 includes a new money issue for SUI's Hospital System. The estimated amount of the bond issue below includes project and issuance costs and represents the best current estimates, but may be adjusted depending upon further-refined project costs and capital needs. The bond issuance schedule below does not include the possible sale of refunding bonds at other Board meetings, which depend upon interest rates and the call dates of outstanding bonds.

Bond Issuance Planning Schedule - Calendar Year 2022

<u>Month</u>	<u>Institution/Type of Issue</u>	<u>Estimated Amount of Bond Issue</u>
January	SUI Hospital System	\$ 300,000,000

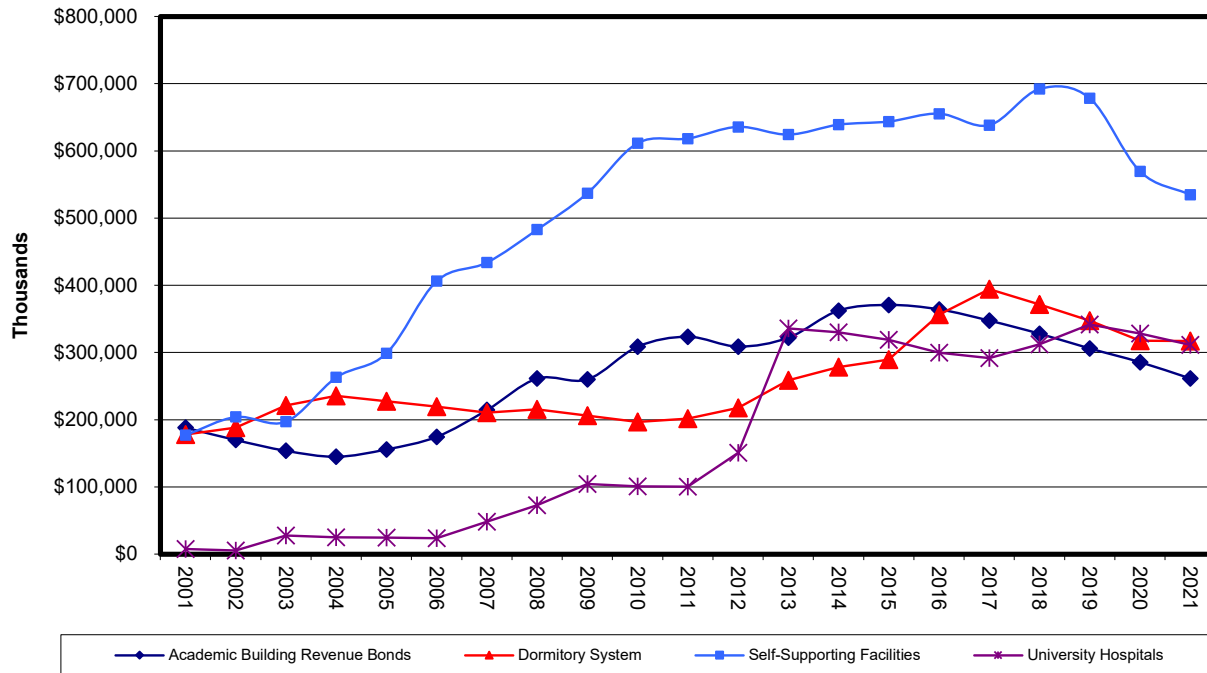
In September 2021, the Board approved the project description and budget (\$395 million) for the new UIHC at Forevergreen Road – Construct Facility project. This healthcare facility would be a 469,000 square foot medical, clinical, educational, and research office building, and extension of the UIHC. A central utility plant, dedicated to this facility, would also be constructed.

Additional Information: The following table summarizes Regent bond issues sold during the last five calendar years. (Bonds issued by the SUI and ISU Facilities Corporations are not included.) Beginning in 2018, federal legislation eliminated the Regents’ ability to utilize tax-exempt bond proceeds to refinance outstanding bond issues at lower rates prior to the call date (known as advance refundings).

Calendar Year	New Bonds Issued	Refunding Bonds Issued	Total Bonds Issued
2017	60,170,000	201,270,000	261,440,000
2018	119,535,000	-	119,535,000
2019	42,475,000	-	42,475,000
2020	76,225,000	100,535,000	176,760,000
2021*	119,715,000	60,870,000	180,585,000

*includes estimated bond issues to be sold later in November 2021

**Regent Institutions
Bond Principal Outstanding
as of June 30, Each Year**



BOND PRINCIPAL OUTSTANDING
BOARD OF REGENTS, STATE OF IOWA

	As of 30-Jun 2012	As of 30-Jun 2013	As of 30-Jun 2014	As of 30-Jun 2015	As of 30-Jun 2016	As of 30-Jun 2017	As of 30-Jun 2018	As of 30-Jun 2019	As of 30-Jun 2020	As of 30-Jun 2021	% of Debt by Type
University of Iowa											
Academic Building Revenue Bonds	\$ 94,255,000	\$ 114,740,000	\$ 165,200,000	\$ 184,020,000	\$ 189,605,000	\$ 179,880,000	\$ 169,915,000	\$ 159,660,000	\$ 148,910,000	\$ 137,125,000	15.2%
Project Notes - Academic Buildings	27,025,000										0.0%
Dormitory System	37,955,000	63,555,000	86,860,000	81,005,000	109,725,000	166,685,000	160,460,000	153,650,000	146,430,000	158,520,000	17.6%
Self-Supporting Facilities	468,215,000	467,110,000	463,340,000	470,480,000	448,505,000	421,095,000	486,240,000	485,775,000	312,695,000	292,775,000	32.5%
University Hospitals	150,860,000	336,010,000	330,105,000	318,900,000	299,700,000	291,510,000	312,185,000	341,845,000	328,405,000	311,270,000	34.6%
Subtotal	\$ 778,330,000	\$ 981,415,000	\$ 1,045,505,000	\$ 1,054,405,000	\$ 1,047,535,000	\$ 1,059,170,000	\$ 1,128,800,000	\$ 1,140,930,000	\$ 936,440,000	\$ 899,690,000	100.0%
Iowa State University											
Academic Building Revenue Bonds	\$ 161,110,000	\$ 157,485,000	\$ 150,655,000	\$ 143,335,000	\$ 135,595,000	\$ 129,580,000	\$ 121,745,000	\$ 112,570,000	\$ 105,640,000	\$ 95,515,000	22.1%
Dormitory System	112,860,000	131,170,000	132,220,000	154,000,000	173,270,000	159,380,000	148,475,000	137,160,000	122,355,000	113,995,000	26.4%
Self-Supporting Facilities	143,375,000	135,235,000	155,755,000	155,670,000	191,520,000	203,915,000	194,860,000	184,860,000	235,070,000	223,055,000	51.6%
Subtotal	\$ 417,365,000	\$ 423,890,000	\$ 438,630,000	\$ 453,005,000	\$ 500,385,000	\$ 492,875,000	\$ 465,080,000	\$ 434,590,000	\$ 463,065,000	\$ 432,565,000	100.0%
University of Northern Iowa											
Academic Building Revenue Bonds	\$ 53,422,084	\$ 49,732,862	\$ 46,481,736	\$ 43,295,000	\$ 38,875,000	\$ 37,880,000	\$ 36,255,000	\$ 33,705,000	\$ 31,050,000	\$ 28,725,000	31.1%
Dormitory System	67,025,000	64,115,000	59,295,000	54,400,000	73,175,000	68,090,000	62,605,000	56,400,000	48,890,000	44,680,000	48.4%
Self-Supporting Facilities	24,125,000	21,845,000	19,835,000	17,475,000	15,335,000	13,145,000	10,935,000	7,575,000	21,630,000	18,855,000	20.4%
Subtotal	\$ 144,572,084	\$ 135,692,862	\$ 125,611,736	\$ 115,170,000	\$ 127,385,000	\$ 119,115,000	\$ 109,795,000	\$ 97,680,000	\$ 101,570,000	\$ 92,260,000	100.0%
GRAND TOTAL	\$ 1,340,267,084	\$ 1,540,997,862	\$ 1,609,746,736	\$ 1,622,560,000	\$ 1,675,305,000	\$ 1,671,160,000	\$ 1,703,675,000	\$ 1,673,200,000	\$ 1,501,075,000	\$ 1,424,515,000	
* July 1 principal payments are not included in June 30th balances.											
Academic Building Revenue Bonds	\$308,767,084	\$321,957,862	\$362,336,736	\$370,650,000	\$364,075,000	\$347,340,000	\$327,915,000	\$305,935,000	\$285,600,000	\$261,365,000	18.3%
Project Notes - Academic Buildings	27,025,000										0.0%
Dormitory System	217,860,000	258,840,000	278,375,000	289,405,000	356,170,000	394,155,000	371,540,000	347,210,000	317,675,000	317,195,000	22.3%
Self-Supporting Facilities	635,715,000	624,190,000	638,930,000	643,625,000	655,360,000	638,195,000	692,035,000	678,210,000	569,395,000	534,685,000	37.5%
University Hospitals	150,860,000	336,010,000	330,105,000	318,900,000	299,700,000	291,510,000	312,185,000	341,845,000	328,405,000	311,270,000	21.9%
Subtotal	\$1,340,267,084	\$1,540,997,862	\$1,609,746,736	\$1,622,560,000	\$1,675,305,000	\$1,671,160,000	\$1,703,675,000	\$1,673,200,000	\$1,501,075,000	\$1,424,515,000	100.0%

Savings from Refunding Bonds Issued: Calendar Years 2001 to date

<u>Inst.</u>	<u>Refunding Bond Amount</u>	<u>Issue</u>	<u>Issue Date</u>	<u>Present Value Savings</u>
SUI	\$ 14,580,000	Academic Building Revenue Refunding Bonds, Series 2002	Apr-02	\$ 1,500,022
SUI	10,530,000	Academic Building Revenue Refunding Bonds, Series 2003	Apr-03	633,705
SUI	6,695,000	Academic Building Revenue Refunding Bonds, Series 2004	Apr-04	258,302
SUI	15,200,000	Academic Building Revenue Refunding Bonds, Series 2005	Mar-05	1,578,496
SUI	18,780,000	Academic Building Revenue Refunding Bonds, Series 2013	Aug-13	1,438,395
SUI	19,785,000	Academic Building Revenue Refunding Bonds, Series 2016	Jun-16	2,532,656
SUI	23,640,000	Academic Building Revenue Refunding Bonds, Series 2016A	Jul-16	2,951,383
SUI	6,775,000	Academic Building Revenue Refunding Bonds, Series 2020	Jul-20	1,531,691
		Subtotal – Academic Build. Rev. Bond Present Value Interest Savings		\$ 12,424,650
SUI	\$ 4,835,000	Iowa Memorial Union Refunding Bonds, Series 2001	Nov-01	\$ 436,743
SUI	6,080,000	Utility System Revenue Refunding Bonds, Series 2003	Feb-03	487,374
SUI	9,415,000	Telecommunications Facilities Revenue Refunding Bonds, Series 2003*	Nov-03	485,369
SUI	8,210,000	Telecommunications Facilities Revenue Refunding Bonds, Series 2008	Jun-08	505,353
SUI	6,255,000	Parking System Revenue Refunding Bonds, Series 2009	Jun-09	389,434
SUI	19,010,000	Utility System Revenue Refunding Bonds, Series 2009	Aug-09	1,849,727
SUI	20,015,000	Dormitory Revenue Refunding Bonds, Series 2010	Mar-10	1,479,280
SUI	5,120,000	Dormitory Revenue Refunding Bonds, Series 2011	Mar-11	591,946
SUI	10,195,000	Utility System Revenue Refunding Bonds, Series 2011	Aug-11	1,043,552
SUI	20,355,000	Hospital Revenue Refunding Bonds, Series 2011A	Oct-11	1,433,719
SUI	16,340,000	Dormitory Revenue Refunding Bonds, Series 2012	Jun-12	1,416,212
SUI	12,010,000	Parking System Revenue Refunding bonds, Series 2013	Jan-13	1,860,563
SUI	13,620,000	Utility System Revenue Refunding Bonds, Series 2013	Jun-13	1,906,929
SUI	6,420,000	Iowa Memorial Union Revenue Refunding Bonds, Series 2014	Apr-14	549,941
SUI	17,905,000	Utility System Revenue Refunding Bonds, Series 2014	Apr-14	1,204,508
SUI	20,885,000	Athletic Facilities Revenue Refunding Bonds, Series 2015	Mar-15	1,332,646
SUI	19,315,000	Athletic Facilities Revenue Refunding Bonds, Series 2015A	Jun-15	1,638,481
SUI	12,130,000	Athletic Facilities Revenue Refunding Bonds, Series 2015B	Aug-15	1,303,268
SUI	21,135,000	Athletic Facilities Revenue Refunding Bonds, Series 2015C	Oct-15	1,623,806
SUI	19,755,000	Athletic Facilities Revenue Refunding Bonds, Series 2015D	Oct-15	1,639,685
SUI	14,830,000	Utility System Revenue Refunding Bonds, Series 2015A	Dec-15	1,806,079
SUI	19,285,000	Utility System Revenue Refunding Bonds, Series 2016	Feb-16	1,851,178
SUI	19,000,000	Hospital Revenue Refunding Bonds, Series 2016	Apr-16	4,123,082
SUI	23,860,000	Hospital Revenue Refunding Bonds, Series 2016A	Jun-16	3,981,131
SUI	17,015,000	Utility System Revenue Refunding Bonds, Series 2016A	Sep-16	2,200,903
SUI	18,650,000	Recreational Facilities Revenue Refunding Bonds, Series 2017	Dec-16	937,695
SUI	20,625,000	Recreational Facilities Revenue Refunding Bonds, Series 2017A	Feb-17	1,458,115
SUI	20,685,000	Recreational Facilities Revenue Refunding Bonds, Series 2017B	Jun-17	2,671,191
SUI	22,075,000	Athletic Facilities Revenue Refunding Bonds, Series 2017A	Oct-17	1,447,949
SUI	17,665,000	Telecommunications Facilities Revenue Refunding Bonds, Series 2020	Apr-20	2,460,449
SUI	20,910,000	Hospital Revenue Refunding Bonds, Series 2020	Jul-20	5,423,725
SUI	5,805,000	Telecommunications Facilities Revenue Refunding Bonds, Series 2021	Apr-21	1,546,584
SUI	13,625,000	Athletic Facilities Revenue Refunding Bonds, Series 2021	Apr-21	2,676,773
SUI	22,705,000	Hospital Revenue and Refunding Bonds, Series SUI 2021A*	Jul-21	3,313,991
		SUI – Grand Total Present Value of Interest Savings		<u>\$ 71,502,031</u>

Savings from Refunding Bonds Issued: Calendar Years 2001 to date

<u>Inst.</u>	<u>Refunding Bond Amount</u>	<u>Issue</u>	<u>Issue Date</u>	<u>Present Value Savings</u>
ISU	\$ 9,805,000	Academic Building Revenue Refunding Bonds, Series 2001A	Apr-01	\$ 917,782
ISU	13,350,000	Academic Building Revenue Refunding Bonds, Series 2001B	Apr-01	1,044,900
ISU	5,430,000	Academic Building Revenue Refunding Bonds, Series 2004A	Apr-04	418,823
ISU	3,135,000	Academic Building Revenue Refunding Bonds, Series 2004B	Apr-04	128,636
ISU	5,510,000	Academic Building Revenue Refunding Bonds, Series 2006	Aug-06	312,774
ISU	15,165,000	Academic Building Revenue Refunding Bonds, Series 2009	Aug-09	336,489
ISU	6,000,000	Academic Building Revenue Refunding Bonds, Series 2013	Dec-13	555,526
ISU	16,315,000	Academic Building Revenue Refunding Bonds, Series 2014	Apr-14	1,681,002
ISU	12,095,000	Academic Building Revenue Refunding Bonds, Series 2015	Dec-15	1,268,389
ISU	23,160,000	Academic Building Revenue Refunding Bonds, Series 2016	Jul-16	2,548,213
ISU	24,175,000	Academic Building Revenue Refunding Bonds, Series 2017	Apr-17	2,665,707
ISU	25,360,000	Academic Building Revenue Refunding Bonds, Series 2017A	Dec-17	2,195,027
ISU	22,990,000	Academic Building Revenue Refunding Bonds, Series 2020	Jul-20	5,665,958
Subtotal – Academic Build. Rev. Bond Present Value Interest Savings				\$ 19,739,226
ISU	\$ 6,210,000	Recreational Facility Revenue Refunding Bonds, Series 2004	Apr-04	\$ 167,579
ISU	16,785,000	Dormitory Revenue Refunding Bonds, Series 2006	Mar-06	1,053,922
ISU	9,200,000	Dormitory Revenue Refunding Bonds, Series 2006A	May-06	613,181
ISU	10,500,000	Dormitory Revenue Refunding Bonds, Series 2008	Mar-08	705,258
ISU	10,925,000	Dormitory Revenue Refunding Bonds, Series 2009	Apr-09	717,537
ISU	13,065,000	Dormitory Revenue Refunding Bonds, Series 2010	Apr-10	988,671
ISU	17,295,000	Dormitory Revenue Refunding Bonds, Series 2011	Apr-11	1,983,695
ISU	12,565,000	Dormitory Revenue Refunding Bonds, Series 2011A	Jun-11	859,471
ISU	3,485,000	Athletic Facilities Revenue Bonds, Series 2012*	Feb-12	408,181
ISU	3,485,000	Parking System Revenue Refunding Bonds, Series 2012	Apr-12	571,854
ISU	16,580,000	Dormitory Revenue Refunding Bonds, Series 2013	Jan-13	2,675,301
ISU	20,055,624	Memorial Union Revenue Refunding Bonds, Series 2013	Apr-13	2,055,624
ISU	2,755,000	Regulated Materials Facility Revenue Refunding Bonds, Series 2013	Apr-13	350,184
ISU	5,350,000	Dormitory Revenue Refunding Bonds, Series 2013B	Jun-13	559,315
ISU	7,405,000	Utility System Revenue Refunding Bonds, Series 2013	Jun-13	1,108,831
ISU	11,760,000	Athletic Facilities Revenue Refunding Bonds, Series 2015	Mar-15	821,581
ISU	4,190,000	Utility System Revenue and Refunding Bonds, Series 2016	Oct-16	561,676
ISU	14,345,000	Dormitory Revenue Refunding Bonds, Series 2016	Oct-16	2,260,482
ISU	8,295,000	Dormitory Revenue Refunding Bonds, Series 2017	Feb-17	615,411
ISU	25,170,000	Recreational Facilities Revenue Refunding Bonds, Series 2017	Jun-17	2,988,976
ISU	6,255,000	Athletic Facilities Revenue Refunding Bonds, Series 2017	Sep-17	801,746
ISU	21,465,000	Recreational Facilities Revenue Refunding Bonds, Series 2017A	Dec-17	1,655,802
ISU	17,650,000	Dormitory Revenue Refunding Bonds, Series 2009	Apr-20	1,560,592
ISU – Grand Total Present Value of Interest Savings				\$ 45,824,096
UNI	\$ 4,890,000	Academic Building Revenue Refunding Bonds, Series 2002	Apr-02	\$ 461,282
UNI	8,465,000	Academic Building Revenue Refunding Bonds, Series 2003	Apr-03	887,899
UNI	4,225,000	Academic Building Revenue Refunding Bonds, Series 2003	Jul-03	289,111
UNI	5,110,000	Academic Building Revenue Refunding Bonds, Series 2005	Mar-05	619,797
UNI	14,015,000	Academic Building Revenue Refunding Bonds, Series 2016	Apr-16	2,020,970
UNI	12,460,000	Academic Building Revenue Refunding Bonds, Series 2016A	Jul-16	1,675,700
UNI	13,835,000	Academic Building Revenue Refunding Bonds, Series 2017	Aug-17	1,671,840
Subtotal – Academic Build. Rev. Bond Present Value Interest Savings				\$ 7,626,599
UNI	\$ 9,535,000	Dormitory Revenue Refunding Bonds, Series 2002	Oct-02	\$ 952,826
UNI	7,465,000	Field House Revenue Refunding Bonds, Series 2005	Apr-05	453,327
UNI	4,255,000	Dormitory Revenue Refunding Bonds, Series 2010	Apr-10	312,956
UNI	10,160,000	Dormitory Revenue Refunding Bonds, Series 2010B	Dec-10	733,328
UNI	3,610,000	Field House Revenue Refunding Bonds, Series 2011	Jun-11	350,651
UNI	8,425,000	Student Union Revenue Refunding Bonds, Series 2011	Aug-11	859,711
UNI	8,910,000	Dormitory Revenue Bonds, Series 2012*	Apr-12	1,069,626
UNI	2,435,000	Student Health System Revenue Refunding Bonds, Series UNI 2013	Apr-13	301,872
UNI	4,815,000	Field House Revenue Refunding Bonds, Series 2013	Apr-13	564,750
UNI	3,460,000	Field House Revenue Refunding Bonds, Series 2015	Mar-15	263,955
UNI	13,330,000	Dormitory Revenue Refunding Bonds, Series 2017	Aug-17	938,930
UNI	14,545,000	Dormitory Revenue Refunding Bonds, Series 2020	Sep-20	1,398,615
UNI – Grand Total Present Value of Interest Savings				\$ 15,827,146
Grand Total - Present Value Interest Savings from Refunding Bonds Issued since 2001:				\$ 133,153,273
Present Value Savings by Type of Bond Issue				
<i>Academic Building Revenue Refunding Bonds</i>				\$ 39,790,475
<i>All Other Refunding Bonds</i>				\$ 93,362,798
Grand Total				\$ 133,153,273