

Contact: Diana Gonzalez

**REQUEST TO CREATE NEW INSTITUTE AT THE UNIVERSITY OF IOWA:
IOWA INSTITUTE OF PUBLIC HEALTH RESEARCH AND POLICY**

Action Requested: Consider approval of the request by the University of Iowa to establish an Iowa Institute of Public Health Research and Policy in the College of Public Health.

Executive Summary: The purpose of the proposed Institute will be to promote development, implementation, and application of cutting-edge public health research to address grand challenges in population health. This proposal was reviewed by the Board Office and the Council of Provosts and is recommended for approval. Board of Regents Policy Manual §6.08 requires that all centers and institutes be approved by the Board. This request addresses the Board of Regents Strategic Plan priorities to provide “educational excellence and impact” and “economic development and vitality” and Goal #7 “Iowa’s public universities shall contribute to the expansion and diversification of the Iowa economy” and Goal #8 “Iowa’s public universities and special schools shall be increasingly efficient and productive.”

Background:

- ◆ **Description of proposed institute.** The proposed Iowa Institute of Public Health Research and Policy (IIPHRP) addresses the Board of Regents Strategic Plan’s mission for Iowa’s public universities to engage in high quality research, scholarship, and creative activities to enhance the quality of life for Iowans and society in general. Community engagement is the cornerstone of public health research and the proposed Institute will increase the level of engagement of the University across the state, nationally, and internationally. The IIPHRP will bring together researchers, public health practitioners, citizens, community leaders, private partners, and policy makers to ensure relevant, timely, and meaningful public health research as well as contribute to the sustainability of Iowa’s Healthiest State initiative.

Moreover, the IIPHRP will provide educational opportunities for professional and academic students in public health and collaborating colleges within the university and across the Regent institutions. The proposed Institute will contribute substantially to achieving the accountability measure of increased total sponsored funding for Board of Regents Strategic Goal 7 and achieving collaborative initiatives within and between the Regent institutions in service of Goal 8. Ultimately, this Institute will integrate research into the community to ensure the achievement of the great potential for healthier individuals, families, and communities.

Research at the College of Public Health (CPH) centers on three Collective Areas of Excellence:

- ⇒ **Rural Health.** With research focusing on the study of exposures, diseases and injuries, healthy aging, healthcare financing and delivery, and health outcomes affecting rural people, CPH faculty and collaborators are developing prevention, intervention, and policy approaches to increase the quality of health for rural populations in Iowa, the U.S., and the world.

- ⇒ **Comparative Effectiveness Research.** This research identifies the most effective programs, policies, or treatments by comparing outcomes from different approaches. CPH researchers are advancing methods and applications that include not only medical treatments and delivery systems, but also prevention, health promotion, environmental improvement, and policy approaches to improving health. With a track record of successful grant applications from CPH faculty and federal investment in comparative effectiveness research of more than \$1 billion in the next few years, the University of Iowa is set to become a national leader in this emerging science.
- ⇒ **Community Engagement.** CPH education, research, and service touches all 99 counties in Iowa. Working with communities through initiatives such as the Business Leadership Network¹ creates opportunities to advance the programs and policies that benefit the health of the community. Community partnerships have led to research on improving childhood health and the reduction of childhood obesity, improved women's health and reduced unintended pregnancy, reduced farm-related accidents and fatalities, improved air quality on local farming operations, and identified early indicators of emerging infectious disease transmission from animals to humans. Development and maintenance of effective community partnerships will be a key focus of the proposed institute.
- ◇ Activities and objectives of the proposed institute. The primary objective of the proposed institute is to expand the scope, scale, and impact of public health research at the University. As federal grant support becomes increasingly competitive, the proposed institute will provide a significant research infrastructure designed to foster new collaborations, within and outside of the university, ensure the highest quality of competitive research proposals, engage public-private partnerships to identify critical research topics, conduct conferences and seminars that showcase the accomplishments and capacity of the university public health research enterprise, and bring national and international experts to campus as visiting scholars to participate in the development of new initiatives. These objectives will be accomplished with the following resources from the CPH and IIPHRP.
 - ⇒ CPH resources.
 - ✓ Expertise and infrastructure for financial management, human resources, research staff training and career development.
 - ✓ Expertise and infrastructure for research design, implementation, analysis, and dissemination.
 - ✓ Pilot grant funding for new investigators.
 - ✓ Access to expertise from the Division of Sponsored Programs, SUI Research Foundation, and the Office of Human Subjects.
 - ✓ A proven track record in large-scale, high impact, and trans-disciplinary research, translation, and dissemination.

¹ <http://now.uiowa.edu/2013/05/emphasizing-public-public-health>.

⇒ IIPHRP activities.

- ✓ Organization and sponsorship of mini conferences and seminars that actively engage faculty, students, and university partners.
- ✓ Provide space, infrastructure, and support to nurture 'collaboratories' that lead to large-scale, innovative, cross-disciplinary research among faculty and with other institutions/organizations. CPH will devote office and conference room space through a competitive application process for teams of faculty to develop center and other large-scale proposals.
- ✓ Host visiting scholars, other experts, and 'executives-in-residence' from the private sector. Identification and support of these individuals will increase the relevance, competitiveness, and funding models for high impact research. Visiting scholars, experts, and in-residence leaders from the private sector will contribute to courses through guest lectures, thus enriching students' educational experience. These activities can also facilitate faculty recruitment and retention.
- ✓ Incubate start-up research initiatives for junior faculty, including identifying faculty across departments and colleges with similar interests to help build their collaborative teams, grant writing, research implementation, mentoring, identification of qualified research staff, and establishing community relationships and advisory boards.
- ✓ Provide educational opportunities for students and community partners.
- ✓ Provide opportunities through local and statewide forums to inform the public about pressing public health issues and advances in public health science.
- ✓ Develop policy briefs to enable the translation of research findings into effective and feasible public health policies.
- ✓ Develop innovative methods for information dissemination for community partners and stakeholders to have timely and appropriate information for their use.

- ◆ Need for proposed institute. Public health research is vital for sustaining and improving the health of people. There are few aspects of health and well-being untouched by advances from public health research, which pushes the health paradigm beyond treatment into prevention. A fundamental challenge for public health in general, and public health research and policy specifically, is its focus on preventing premature death and disability. Critical research findings often focus on the absence of bad outcomes which are important for the health and well-being of populations, but less evident than curing existing diseases. Public health research topics can include any of the following - understanding the origins and transmission of epidemic illnesses; designing clinical trials that evaluate personalized treatments for diseases; identifying methods of rapidly translating biomedical advances into front-line clinical practice; and evaluating community-based efforts to improving the health of the physical environment and well-being of the population. The goals of public health are to align appropriate entities with a vision for partnership, innovation, and improvement.

- ◆ Relationship of proposed Institute to University's strategic plan. The proposed Institute supports the mission and strategic vision of the university and college. The university strategic plan describes the university as a comprehensive research university with a world-class academic health center and a wide array of exceptional professional programs. The university seeks to advance scholarly endeavor through leading-edge research and to use the research to enhance education, health care, and other services provided to the people of Iowa, the nation, and the world. The strategic vision for the university is that of a distinguished research university of global reach and impact that has vibrant programs for student success. The activities of the IIPHRP will accelerate the achievement of this vision as it facilitates and catalyzes new, high impact collaborative research programs that cross the boundaries of public health and other disciplines. Increased interdisciplinary research focused on maintaining and enhancing the well-being of individuals and communities will also enhance opportunities for graduate and undergraduate students to acquire hands-on, professional learning experiences.

Creation of the IIPHRP is a key strategy in the CPH's 2011-2016 Strategic Plan. Foundational goals for this strategy are to ensure that public health research is a distinct entity in the health sciences, create intellectual communities that cross disciplinary boundaries, create a centralized research infrastructure, enhance public-private collaborations, increase the scope and impact of public health research at the University, and enhance philanthropic opportunities. The proposed Institute addresses the core values of the University and the College: Excellence, Learning, Community, Diversity, Integrity, Respect, Responsibility, and Social Justice.

- ◆ Relationship of proposed Institute to existing centers/institutes. Individual centers and faculty in the College participate in productive collaborations with other existing centers and institutes. Creation of the IIPHRP will expand and enhance integration of research and policy work by creating a single, visible point of connection and by providing resources and infrastructure to accelerate new collaborations. This Institute will serve as a focal point for local, national, and international stakeholders in public health – an organizational advancement that will help coordinate activities internally and optimize collaboration externally. Moreover, the IIPHRP will enhance existing relationships with other centers and institutes, with University initiatives (e.g., cluster hires, community engagement), and with the biomedical research enterprise.

Existing centers and institutes include the Public Policy Center, Obermann Center, Institute for Clinical and Translational Science, Pappajohn Biomedical Discovery Institute, Center for Urban and Regional Planning, and Center for Global and Regional Environmental Research.

The College also collaborates in several University cluster hires: water sustainability, genetics, obesity, aging mind and brain, and informatics. Public health relevant initiatives that arise from these topic-focused clusters will be supported by the proposed Institute. The IIPHRP will facilitate cross-cluster collaborations as part of its mission.

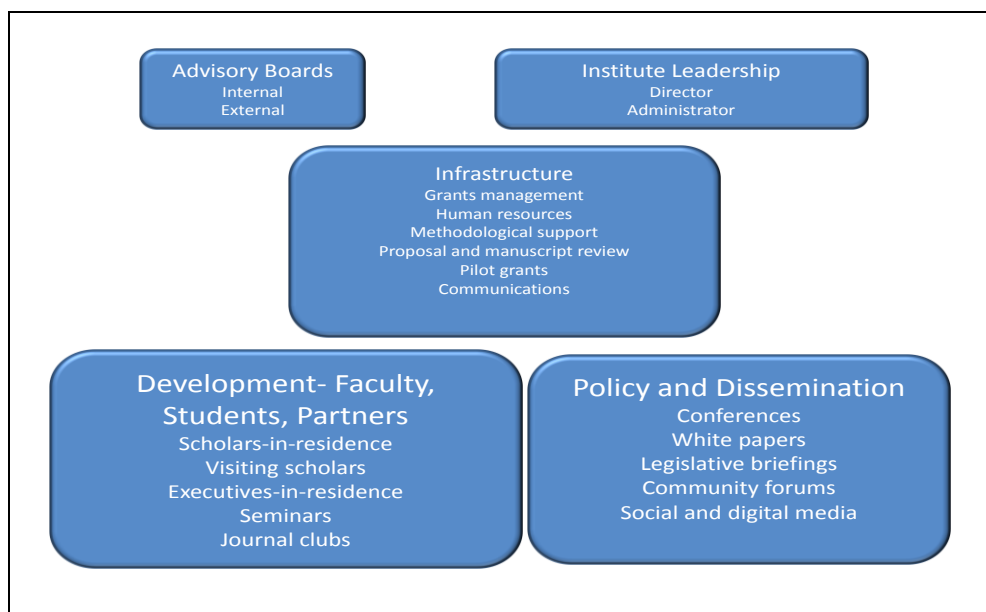
With a focus on community engaged research, the IIPHRP will collaborate with the University's recently created Office of Engagement. The Institute will extend University capacity for research and policy development to communities across the state. Through seminars, visiting faculty, collaboratories, mini-conferences, and community-partner focused educational opportunities, the Institute will bring the benefits of best practices in community-engaged research to the University.

The IIPHRP will also help to accelerate translation of biomedical research discoveries (e.g., from the Eagle's Diabetes Center and the Genetics Institute) through focus on the science of rapid dissemination. The Institute will convene basic, clinical, and health services researchers during the design and conduct of cutting-edge biomedical research to ensure early attention to research that focuses on how to get knowledge from science into the practice of medicine and public health.

- ◆ Relationship of proposed Institute to other Iowa institutions. The College of Public Health is unique as the only nationally accredited college of public health in the State of Iowa; the proposed Institute will not result in duplication. The IIPHRP will facilitate the growth of collaborations with centers and institutes at other Regent universities. The foundation for this growth is existing collaborations with units such as the Center for Social and Behavioral Research at the University of Northern Iowa and the Iowa State University Extension and Outreach Program. State-wide relationships include an existing Memorandum of Understanding with the State Hygienic Laboratory that includes collaboration in research and teaching. As the IIPHRP matures, additional collaborative agreements with other centers and institutes are anticipated.
- ◆ Unique features of the University of Iowa. Although only 15 years old, the College has distinguished itself as a research-intensive college. Faculty average more than \$600,000 per person in annual research funding, which is higher than in any other university college. The faculty conduct the majority of this research with external state and national partners and with a vision toward community impact. The current portfolio of research that links directly to policy work is the Center for Rural Health Policy Analysis, which includes an expert health panel. The Center's work is conducted under the aegis of a national Rural Policy Research Institute (RUPRI) and comprises more than \$1.7 million in extramural support. The RUPRI health portfolio provides policy research and analysis to national and state policy staff and provides evidence-based recommendations for action to local and regional health systems. The proposed Institute will be provided assets, including productive faculty, scalable collaborations within and outside of the university, and public-private partnerships, including a state-wide Business Leadership Network that is building relationships with small business leaders in dozens of communities in Iowa. The College's Board of Advisors that includes representatives from other Regent institutions, major businesses in Iowa, national thought leaders in public health, and leadership from private colleges in Iowa is supportive of this initiative, as are the other health sciences deans at the university.
- ◆ Proposed Institute structure and organization. The proposed Institute will have a director and administrator as well as employees with expertise in research administration and implementation. The director will be selected from current faculty and assigned on a part-time basis to lead the institute. Administrative and infrastructure support will be available from current collegiate and professional staff. Additional personnel will include professional research staff, affiliated faculty, visiting faculty, and executives-in-residence. The majority of the personnel costs will be funded by research projects. The total number of IIPHRP personnel will be at least 50 by the end of three years.

The IIPHRP will include an internal and external advisory board. The internal advisory board will include public health, public policy, and health sciences research leaders at the university. The external advisory board will include representatives from the University of Northern Iowa and Iowa State University, as well as nationally prominent public health researchers. The advisory boards will review the institute’s strategic objectives, annual achievements, and assure objective and rigorous review of the institute every five years.

An overview of the structure is provided below.



- ❖ **Resources.** No new equipment is anticipated for the proposed Institute because needed equipment is already in place; additional equipment will be dependent on grant funding. Space for the proposed institute is either currently available or will be developed in unfinished space in the College of Public Health building.
- ❖ **Expected need.** The proposed Institute is expected to be in existence for the life of the College and to grow as the College grows. The institute will undergo annual reviews regarding its strategic plan objectives and benchmarks. It will also undergo external review every five years.
- ❖ **Costs and funding sources.** The goal for the institute activities is to be sustained from grants and philanthropy. Loss of all external funding will reduce the activities but not eliminate the institute. Funding for the first three years includes non-recurring dollars from the College Faculty Development Fund and existing philanthropic resources in the College Development Fund. Salary support for research infrastructure has been allocated to current employees who will support the work of the institute. The research and policy work of the institute will be supported by extramural funding. The Rural Policy Research Institute is the flagship extramural funding for the institute.

**PROPOSED REVENUES AND EXPENDITURES
IOWA INSTITUTE OF PUBLIC HEALTH RESEARCH AND POLICY**

YEAR	TOTAL COSTS	SOURCE(S) OF FUNDS	TOTAL NEW COSTS
Year 1 (FY 2015)	\$285,000 \$1,710,000 \$52,000 TOTAL \$2,047,000	College Reallocation Grants Philanthropy	\$285,000 \$1,710,000 \$52,000 TOTAL \$2,047,000
Year 2 (FY 2016)	\$289,625 \$1,761,300 \$100,000 TOTAL \$2,150,925	College Reallocation Grants Philanthropy	\$4,625 \$51,300 \$48,000 TOTAL \$103,925
Year 3 (FY 2017)	\$224,365 \$3,500,000 \$150,000 TOTAL \$3,874,365	College Reallocation Grants Philanthropy	(\$65,260) \$1,738,700 \$50,000 TOTAL \$1,723,440
Year 4 (FY 2018)	\$199,224 \$5,000,000 \$200,000 TOTAL \$5,399,224	College Reallocation Grants Philanthropy	(\$25,141) \$1,500,000 \$50,000 TOTAL \$1,524,859
Year 5 (FY 2019)	\$204,205 \$5,150,000 \$210,000 TOTAL \$5,564,205	College Reallocation Grants Philanthropy	\$4,981 \$150,000 \$10,000 TOTAL \$164,981
Year 6 (FY 2010)	\$209,311 \$5,304,500 \$220,500 TOTAL \$5,734,311	College Reallocation Grants Philanthropy	\$5,106 \$154,500 \$10,500 TOTAL \$170,106
Year 7 (FY 2021)	\$214,543 \$5,463,635 \$231,525 TOTAL \$5,909,703	College Reallocation Grants Philanthropy	\$5,232 \$159,135 \$11,025 TOTAL \$175,392

- ◆ Implementation. After obtaining Board approval, the College of Public Health is prepared to implement the Institute in Spring 2015.