

ANNUAL REVIEW OF PEER GROUP COMPARISONS

Action Requested: Receive the report.

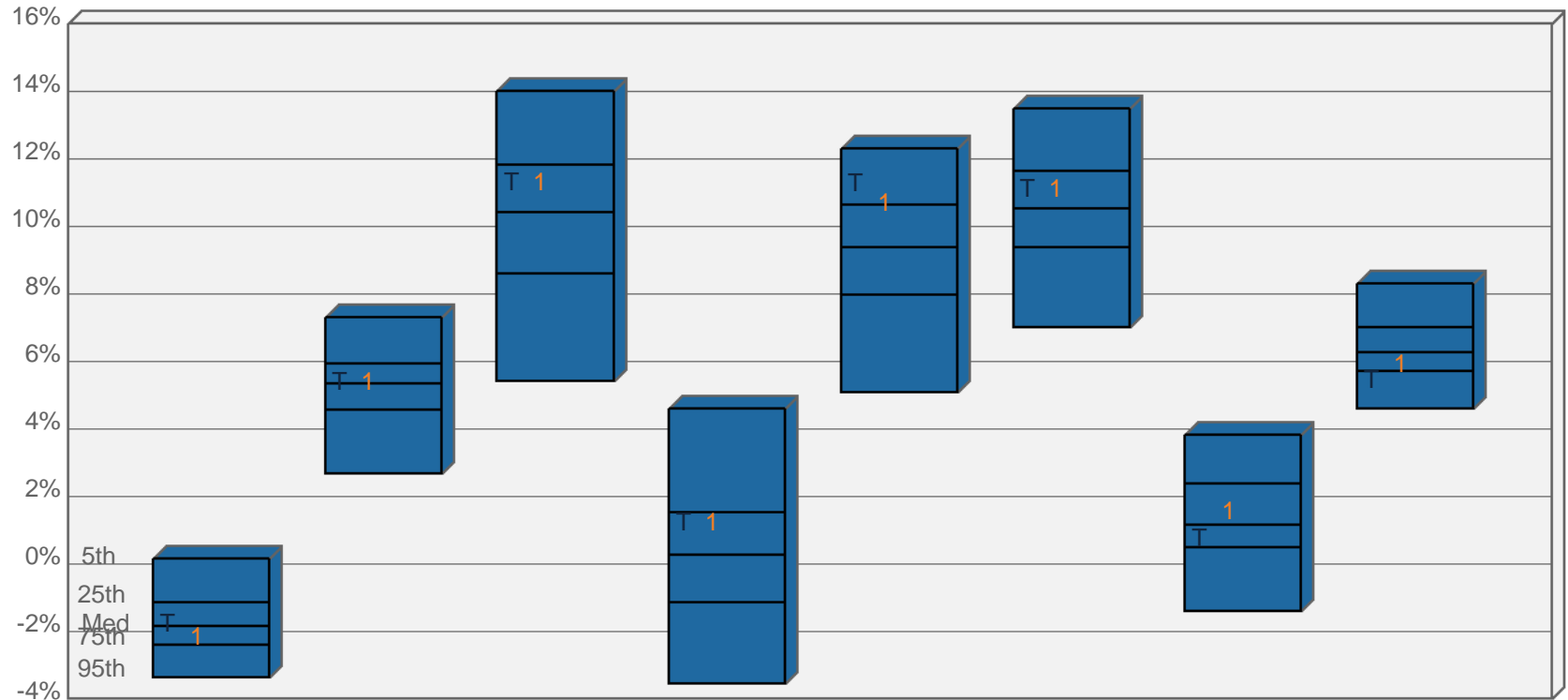
Executive Summary: At its June 6, 2012, meeting, the Committee requested that Wilshire Consulting provide annual reports of peer group comparisons for the University of Iowa and Iowa State University endowment portfolios. This is the first annual report and is for the periods ended June 30, 2012.



*Board of Regents – State of Iowa
Peer Universe Comparison
Periods Ended June 30, 2012*

Total Endowment Composite

Periods Ended June 30, 2012

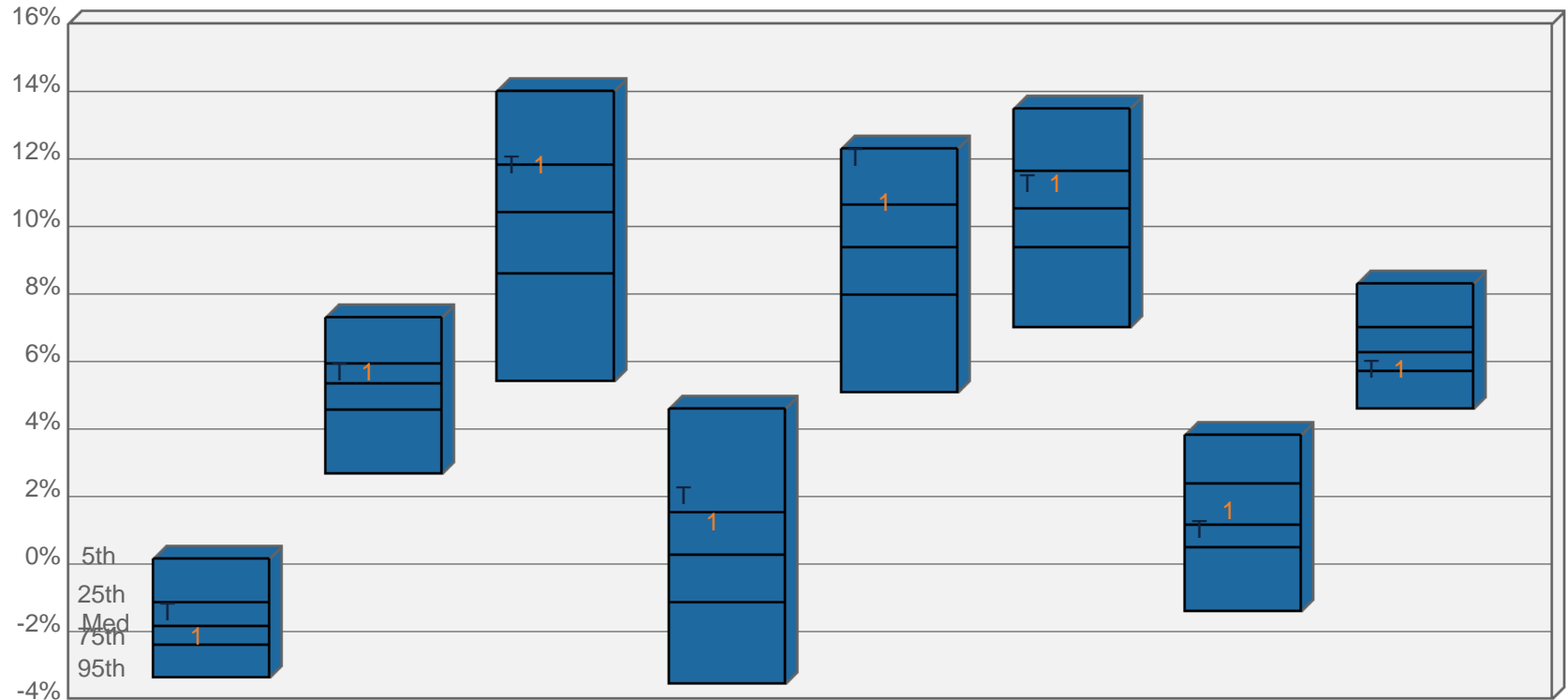


	1 Quarter	2 Quarters	3 Quarters	1 Year	2 Years	3 Years	5 Years	10 Years
T Total Endowment	-1.73 (46)	5.42 (45)	11.33 (35)	1.26 (34)	11.31 (14)	11.15 (35)	0.80 (65)	5.48 (82)
1 Policy Index	-2.14 (63)	5.49 (43)	11.51 (31)	1.25 (35)	10.73 (23)	11.10 (35)	1.59 (38)	5.96 (61)
5th %tile	0.15	7.31	14.02	4.59	12.31	13.48	3.83	8.31
25th %tile	-1.13	5.93	11.83	1.53	10.64	11.64	2.39	7.01
Median	-1.85	5.35	10.44	0.29	9.37	10.53	1.17	6.28
75th %tile	-2.39	4.56	8.59	-1.14	7.97	9.39	0.50	5.71
95th %tile	-3.34	2.69	5.41	-3.54	5.10	7.00	-1.39	4.59
Number of Funds	225	224	221	219	205	192	175	124

*Total Returns of Total Fund Eleemosynary Plans Universe - Gross of Fees

Total Endowment Composite

Periods Ended June 30, 2012



	1 Quarter	2 Quarters	3 Quarters	1 Year	2 Years	3 Years	5 Years	10 Years
T Total Endowment	-1.40 (35)	5.71 (36)	11.83 (25)	2.05 (19)	12.07 (6)	11.30 (31)	1.05 (55)	5.79 (72)
I Policy Index	-2.14 (63)	5.49 (43)	11.51 (31)	1.25 (35)	10.73 (23)	11.10 (35)	1.59 (38)	5.96 (61)
5th %tile	0.15	7.31	14.02	4.59	12.31	13.48	3.83	8.31
25th %tile	-1.13	5.93	11.83	1.53	10.64	11.64	2.39	7.01
Median	-1.85	5.35	10.44	0.29	9.37	10.53	1.17	6.28
75th %tile	-2.39	4.56	8.59	-1.14	7.97	9.39	0.50	5.71
95th %tile	-3.34	2.69	5.41	-3.54	5.10	7.00	-1.39	4.59
Number of Funds	225	224	221	219	205	192	175	124

*Total Returns of Total Fund Eleemosynary Plans Universe - Gross of Fees