

Contact: Jean Friedrich

INSTITUTIONAL AGREEMENTS, LEASES AND EASEMENTS

Action Requested: Consider approval of one lease and one easement for the benefit of the University of Iowa, subject to approval of the final documents by the Board Office and Attorney General's Office.

(ROLL CALL VOTE)

Executive Summary: Iowa Code §262.11 requires that certain agreements, leases, and easements be approved by the Board of Regents by roll call vote. The lease agreement and easement are being reviewed by the Attorney General's Office and are subject to approval of the final documents by the Board Office and Attorney General's Office.

University of Iowa with Board as Tenant for the following sub-lease:

University of Iowa Community Medical Services

This space is owned by Liberty Growth VI, LC, of Iowa City, Iowa and has been leased to the University of Iowa Community Medical Services, Inc. (UICMS). UICMS leases the entire 16,118 square foot building.

The sub-lease with University of Iowa Community Medical Services is for a ten-year term, commencing on May 1, 2010 through April 30, 2020, consisting of approximately 9,930 square feet located at 3465 Mulberry Avenue in Muscatine, Iowa, at the rate of \$25.85 per square foot (\$21,930 per month or \$256,680 per year). The University would have the option to extend the lease for two additional five-year periods.

The lease would provide space for the UIHC Dialysis Center. The University has operated a dialysis center in leased space in Muscatine since 1995. These operations would be relocated to the new larger, more modern space specifically designed for these functions, meeting hospital codes and Joint Commission standards.

University of Iowa with the Board as Owner for the following easement:

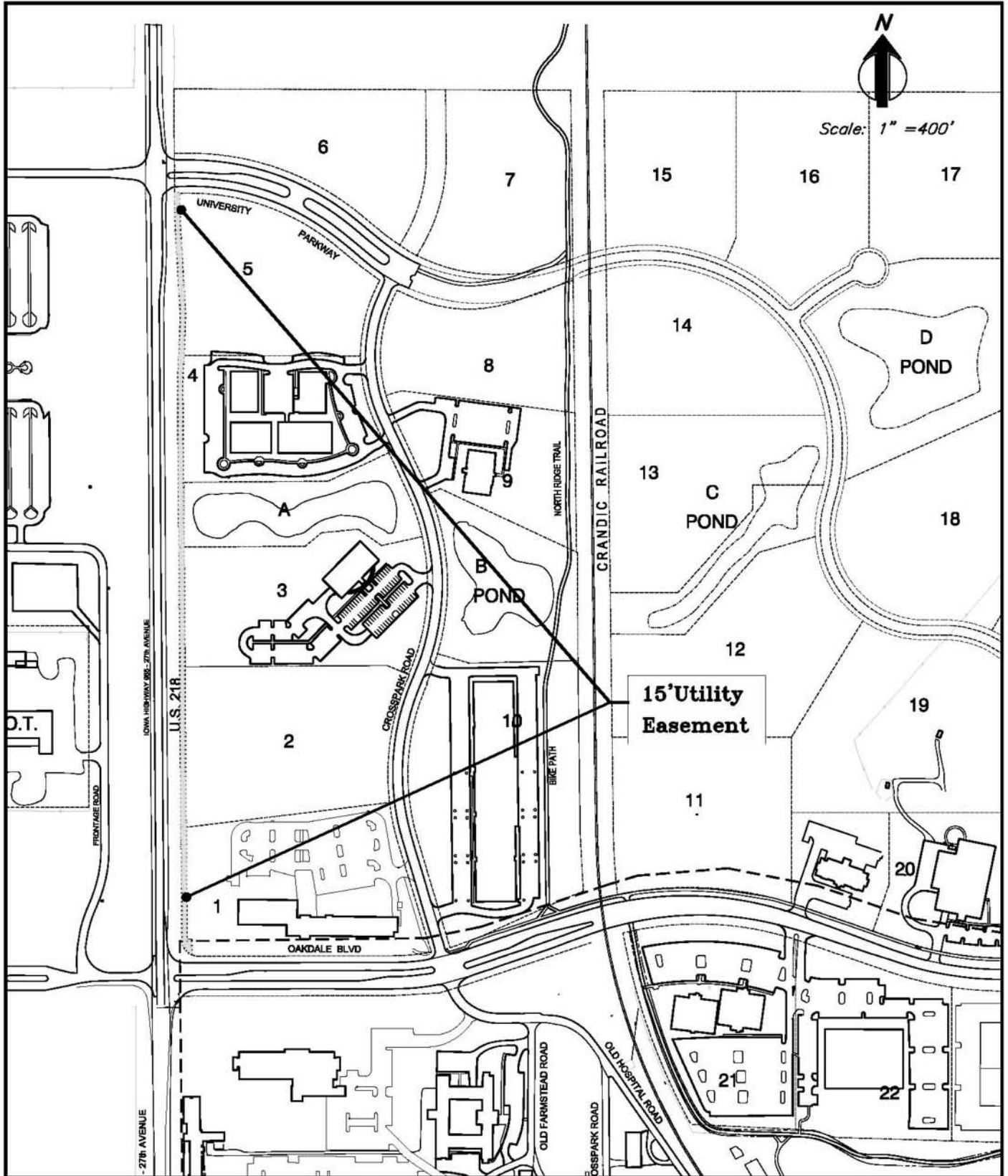
Linn County Rural Electric Cooperative for Electric Facilities

Electric lines and associated facilities are currently in existence and were put underground at this location at the University's request when the Research Park was established in the late 1980s. This easement was never completed when the Research Park was platted.

Easement would grant the Cooperative access to repair, reconstruct, operate, and maintain electric lines and associated facilities running parallel to Highway 965 along the University of Iowa Research Park's west boundary. See Attachment A for map.

The permanent easement of 15 feet in width (seven and one-half feet either side of electric facility) would be granted in consideration of the payment of One Dollar.

Additional information is available from the Board Office.



**THE UNIVERSITY
OF IOWA**

Plotted: April 26, 2010
LinnCoRuralElectEasement.dwg

**Location Map
Permanent Easement To The Linn County
Rural Electric Cooperative**