

Contact: John Nash

INSTITUTIONAL AGREEMENTS, LEASES AND EASEMENTS

Action Requested: Iowa State University requests Board approval of two easements.

- *Iowa Code §262.9 (8)* authorizes the Iowa Board of Regents to grant easements for rights-of-way over, across, and under the surface of public lands under its jurisdiction when in the board's judgment such easements are desirable and would benefit the state of Iowa.

Item #1: ISU Electrical Utility Easement: ISU would grant a permanent electrical utility easement to the City of Ames for the City to continue to widen South 16th Street.

Item #2: ISU Electrical Utility Easement: ISU would grant a permanent electrical utility easement to the City of Ames to assist the City with their upgrade to their high voltage electrical transmission system.

Item #1 of 2
ISU Electrical Utility Easement

Executive Summary: To assist the City of Ames to continue to widen South 16th Street from two lanes to four lanes, Iowa State University requests Board approval of a proposed permanent electrical utility easement.

Background: The easement would support the City of Ames relocation, reconstruction, operation, and maintenance of underground electrical distribution lines.

Cost: \$0. The City of Ames's use of this infrastructure to provide electrical services to Iowa State University is the consideration for granting this easement.

Term: Perpetuity



Iowa State University, southeast of central campus

North



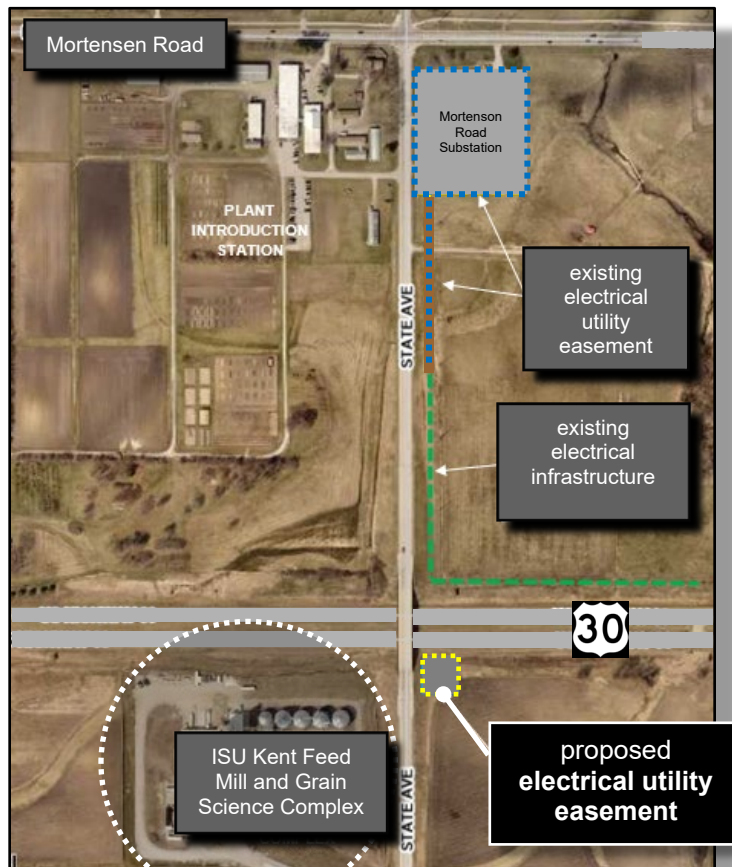
Item #2 of 2
ISU Electrical Utility Easement

Executive Summary: To assist the City of Ames with their upgrade to their high voltage electrical power transmission system, Iowa State University requests Board approval of a proposed permanent electrical utility easement.

Background: The easement would facilitate the City of Ames' replacement of an existing guy pole and down wires, which are components of the City's 69 kilovolt transmission system that runs along State Avenue and US Highway 30.

Cost: \$0. The City of Ames's use of this infrastructure to provide electrical services to Iowa State University is the consideration for granting this easement.

Term: Perpetuity



1.5 miles southwest of ISU's Central Campus

